



Tansley review

Plant carbon metabolism and climate change: elevated CO₂ and temperature impacts on photosynthesis, photorespiration and respiration

Author for correspondence:

Danielle A. Way

Tel: +1 519 661 2111 ext. 88734

Email: dway4@uwo.ca

Received: 6 March 2018

Accepted: 11 May 2018

Mirindi Eric Dusenge^{1*}, André Galvao Duarte^{1*}  and Danielle A. Way^{1,2}

¹Department of Biology, University of Western Ontario, London, ON N6A 5B7, Canada; ²Nicholas School of the Environment, Duke

University, Durham, NC 27708, USA

Contents

Summary	32	VI. No plant is an island: water and nutrient limitations define plant responses to climate drivers	41
I. The importance of plant carbon metabolism for climate change	32	VII. Conclusions	42
II. Rising atmospheric CO ₂ and carbon metabolism	33	Acknowledgements	42
III. Rising temperatures and carbon metabolism	37	References	42
IV. Thermal acclimation responses of carbon metabolic processes can be best understood when studied together	38	Appendix A1	48
V. Will elevated CO ₂ offset warming-induced changes in carbon metabolism?	40		

New Phytologist (2019) **221**: 32–49

doi: 10.1111/nph.15283

Key words: acclimation, drought, nitrogen, stomatal conductance, warming, water use efficiency.

Summary

Plant carbon metabolism is impacted by rising CO₂ concentrations and temperatures, but also feeds back onto the climate system to help determine the trajectory of future climate change. Here we review how photosynthesis, photorespiration and respiration are affected by increasing atmospheric CO₂ concentrations and climate warming, both separately and in combination. We also compile data from the literature on plants grown at multiple temperatures, focusing on net CO₂ assimilation rates and leaf dark respiration rates measured at the growth temperature (A_{growth} and R_{growth} , respectively). Our analyses show that the ratio of A_{growth} to R_{growth} is generally homeostatic across a wide range of species and growth temperatures, and that species that have reduced A_{growth} at higher growth temperatures also tend to have reduced R_{growth} , while species that show stimulations in A_{growth} under warming tend to have higher R_{growth} in the hotter environment. These results highlight the need to study these physiological processes together to better predict how vegetation carbon metabolism will respond to climate change.

I. The importance of plant carbon metabolism for climate change

Since the Industrial Revolution, atmospheric CO₂ concentrations have risen from 280 ppm to over 410 ppm (Ciais *et al.*, 2013), a

45% increase. These higher CO₂ concentrations, along with increasing concentrations of other greenhouse gases, have led to a 0.8°C rise in mean annual global temperatures as of 2017 (Hansen *et al.*, 2010). Depending on how aggressive we are about reducing CO₂ (and other greenhouse gas) emissions, atmospheric CO₂ concentrations will probably be between 550 and 1000 ppm by the end of the century, leading to global mean air temperature increases

*These authors contributed equally to this work.

of another 1–3.7°C (Ciais *et al.*, 2013). Because CO₂ is a well-mixed gas, there is only minor spatial or temporal heterogeneity in the CO₂ concentration across the Earth's surface at any time (on the order of *c.* 10 ppm), mainly due to regional differences in weather patterns, as well as plant and soil activity (Chahine *et al.*, 2008). In contrast to this pattern of global CO₂ increase, warming will be more severe in some regions than others: high latitudes could warm by 10°C by the year 2100, while the tropics will see smaller temperature increases of *c.* 3–4°C (Ciais *et al.*, 2013). Warming will also be greatest during the winter months and at night: a 10°C mean annual air temperature rise in the Arctic could translate into 12°C increases in minimum winter temperatures (Ciais *et al.*, 2013).

These climatic changes are predicted to have enormous impacts on the Earth's vegetation. Temperature is one of the most important controls on species distribution across the globe (Woodward, 1987), and most biological processes are temperature-sensitive. Not only will higher temperatures alter the thermal environment of plants, but the atmosphere is likely to become drier in the future as the driving force for evapotranspiration increases (Ficklin & Novick, 2017). Rising CO₂ will thus indirectly impact plant performance through its effect on air temperature and water stress. However, CO₂ also directly affects plant metabolism, most importantly through its role in photosynthesis, which is the entry point for carbon into the biosphere (Box 1, Fig. A). Elevated CO₂ concentrations are therefore expected to increase leaf photosynthetic rates, but the degree to which this will actually occur is unclear, given that the stimulation of photosynthesis by CO₂ depends on leaf temperature, and water and nutrient availability (Leakey *et al.*, 2009; Zhu *et al.*, 2017).

Plants are not only affected by climate but are themselves key regulators of global and regional climate (Zhu *et al.*, 2017; Fig. 1), making it imperative that we understand how vegetation will respond to future climate conditions. Photosynthesis in terrestrial plants absorbs *c.* 123 Gt C from the atmosphere every year and about half of the carbon fixed by leaves (*c.* 60 GT C) is then returned to the atmosphere annually via autotrophic respiration (Amthor & Baldocchi, 2001; Beer *et al.*, 2010; Ciais *et al.*, 2013). Vegetation thus helps determine atmospheric CO₂ concentrations, and through this effect, global climate. Terrestrial ecosystems currently absorb *c.* 30% of the anthropogenic CO₂ emitted every year (Le Quéré *et al.*, 2016), slowing climate change by preventing atmospheric CO₂ concentrations from rising as quickly as they would without this mitigating effect. Because carbon fluxes from vegetation are much larger than the CO₂ emitted by human activities (*c.* 10.3 Gt C yr⁻¹; Le Quéré *et al.*, 2016), large-scale alterations in plant carbon fluxes could either mitigate or accelerate climate change (Smith & Dukes, 2013). If elevated CO₂ and temperatures increase net photosynthetic CO₂ fixation, plants may continue to slow climate change, but only if this extra carbon finds its way into recalcitrant pools in the soils or deep oceans rather than in rapidly cycling carbon fluxes and pools, such as leaf litter or labile soil carbon. However, if climate change reduces plant net CO₂ uptake on a global scale (either through direct effects on carbon fluxes or by reducing vegetation cover), then vegetation could accelerate the rate of CO₂ increase and lead to a more rapidly

warming world than we currently predict (Fig. 1). While the responses of stem, root and soil respiration to climate change will play a large role in determining future ecosystem carbon fluxes, we will concentrate on leaf-level processes in this paper, as photosynthesis and respiration in leaves comprise significant global carbon fluxes that are intimately linked within a plant through biochemical and physiological mechanisms.

II. Rising atmospheric CO₂ and carbon metabolism

Higher CO₂ concentrations stimulate net photosynthesis by increasing CO₂ substrate availability for Rubisco and simultaneously suppressing photorespiration (Drake *et al.*, 1997). However, this effect is not linear (Farquhar *et al.*, 1980). At low internal CO₂ concentrations (C_i), Rubisco carboxylation rates limit photosynthesis, and net CO₂ assimilation rates (A_{net}) rise steeply as C_i increases. As C_i increases further, photosynthesis becomes limited by the ability to regenerate RuBP (i.e. the photosynthetic electron transport rate), and then by the ability to use triose phosphates to produce starch and sucrose (Sharkey *et al.*, 1986). These processes are less CO₂-sensitive than Rubisco carboxylation, so for a given increase in C_i , photosynthesis is stimulated more when C_i is low than when C_i is higher (Farquhar *et al.*, 1980; Sharkey *et al.*, 2007). Accordingly, rising CO₂ should have the greatest effects on plant carbon uptake in conditions where C_i is low, for example when stomatal conductance is low and diffusion of CO₂ into the leaf is restricted (Ainsworth & Rogers, 2007). This also implies that the increases in CO₂ concentration that

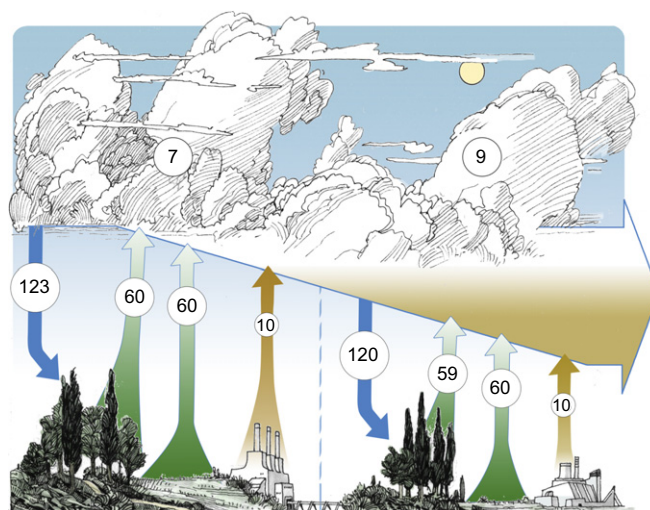


Fig. 1 A simplified schematic of the interplay between the climate system and carbon (C) fluxes in vegetation. Circles in the arrows indicate fluxes of CO₂ in Gt C yr⁻¹; circles in the sky show the balance of CO₂ resulting from those fluxes. Left panel, terrestrial vegetation absorbs CO₂ from the atmosphere through photosynthesis (blue arrow). Respiration (green arrows) releases CO₂ back to the atmosphere from both vegetation and soil. Anthropogenic CO₂ emissions are depicted with a brown arrow. Right panel, a hypothetical future scenario where climate change reduces global photosynthesis and plant respiration, although soil and anthropogenic CO₂ emissions remain unchanged. The net effect of these reductions in vegetation carbon fluxes is a greater accumulation of CO₂ in the atmosphere.

Box 1 Plant carbon metabolism: photosynthesis, photorespiration and respiration

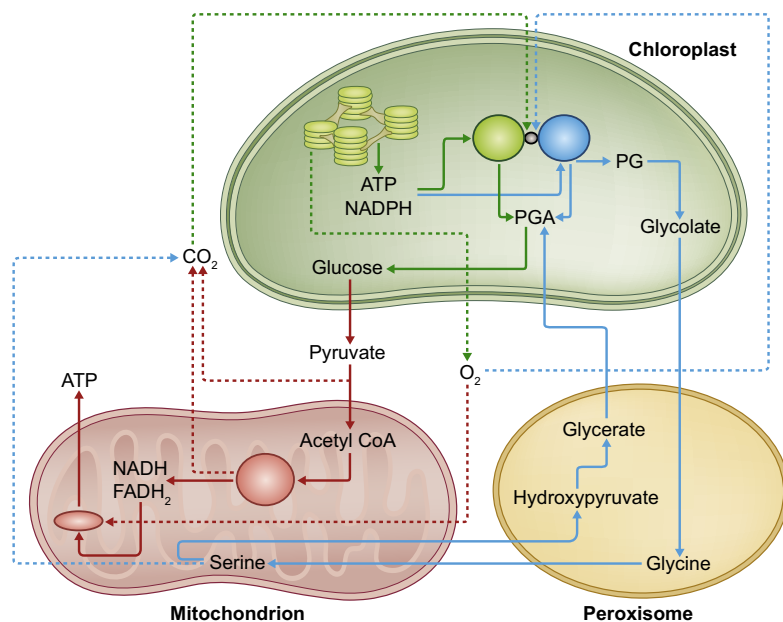
For the purpose of this review, we focus on three metabolic processes that dominate carbon fluxes in vegetation: photosynthesis, photorespiration and respiration (Box Fig. 1 below). Other physiological processes, including the formation and release of volatile organic compounds and root exudates, can consume substantial amounts of carbon (Penuelas & Matamala, 1990; Pausch & Kuzyakov, 2018), but these topics are beyond the scope of this paper. Each metabolic process is composed of a suite of biochemical, biophysical and physiological reactions that have different sensitivities to temperature and CO_2 , which, taken together, dictate how photosynthesis, photorespiration and respiration respond to climate change drivers. In the following section, we give a brief overview of these three processes, but for more detailed descriptions, please see Taiz *et al.* (2014).

Photosynthesis begins with the absorption of a photon, which excites a specialized chlorophyll, P680, leading to the ejection of an electron from P680. This electron is transported through the photosynthetic electron transport chain to the final electron acceptor (NADP^+) via a series of redox reactions that include the absorption of a second photon by the antenna system of photosystem I, producing the reductant NADPH. Along the way, a proton gradient is created across the thylakoid membrane and this gradient generates ATP via an ATP synthase.

Much of the energy and reducing power created in photosynthetic electron transport is used in the chloroplast stroma in the Calvin–Benson cycle. CO_2 is fixed to ribulose-1,5-bisphosphate (RuBP) by the enzyme Rubisco (ribulose-1,5-bisphosphate carboxylase/oxygenase), producing 3-phosphoglycerate (PGA). This PGA is converted to 1,3-bisphosphoglycerate (which requires ATP), and then reduced to glyceraldehyde 3-phosphate (G3P), a reaction that consumes NADPH. Some of the G3P is used to regenerate RuBP (a process that also uses ATP), while the rest is used to make glucose, sucrose and other carbon-based molecules.

While Rubisco can fix CO_2 in photosynthesis, Rubisco is a dual function enzyme that can both carboxylate and oxygenate RuBP (Spreitzer & Salvucci, 2002). In contrast to the two molecules of PGA produced in a carboxylation event, oxygenation of RuBP by Rubisco produces one molecule of PGA and one of 2-phosphoglycolate (PG). As PG is toxic if it accumulates in plant cells (Zelitch *et al.*, 2009), it must be processed via photorespiration. The PG is converted to glycolate, which is shuttled to the peroxisome, where it is converted to glyoxylate and then (with the addition of NH_2) into glycine. This glycine is converted to serine in the mitochondria, releasing a molecule each of CO_2 and NH_4 , and consuming NADH_2 . The serine is shuttled back to the peroxisome where it is converted to pyruvate and then glycerate, with the latter reaction consuming more NADH_2 . The glycerate can then be phosphorylated to form PGA in the chloroplast, at the cost of an ATP, while another ATP is used in photorespiration to produce the glutamate needed to provide NH_2 for the production of glycine. Thus, overall, photorespiration consumes ATP and reducing power, while releasing previously fixed CO_2 . In addition, glyoxylate (a photorespiratory metabolite) can inhibit Rubisco activity (Cook *et al.*, 1985; Campbell & Ogren, 1990). Photorespiration is one of the biggest metabolic fluxes in plants, and photorespiratory rates can be *c.* 25% of photosynthetic rates in C_3 leaves at 25°C (Sharkey, 1988).

Respiration involves the breakdown of glucose formed via photosynthesis to produce ATP to fuel plant metabolism. Glucose is initially broken into pyruvate in glycolysis, which is oxidized to form acetyl-CoA, releasing a molecule of CO_2 . The acetyl-CoA then enters the tricarboxylic acid pathway, where it is oxidized to CO_2 , producing reductants for use in the mitochondrial electron transport chain. Oxidation of these reductants (and succinate, which is also created in the citric acid cycle) generates a proton gradient across the inner membrane of the mitochondria that drives ATP synthesis. Both respiration and photorespiration consume O_2 and release CO_2 , but mitochondrial respiration occurs in both the light and the dark, unlike photorespiration, which operates only in the light. While respiration is thought to be suppressed by light by *c.* 30% (Sharp *et al.*, 1984), the exact effect of light on mitochondrial respiration is difficult to assess in leaves and is a matter of current debate (Tcherkez *et al.*, 2017).



Box Fig. 1 Simplified depiction of the major biochemical linkages between photosynthesis, photorespiration and respiration. Rubisco, small grey circle; the Calvin–Benson cycle, green circle; photorespiration, blue circle; citric acid cycle, red circle. The thylakoids and photosynthetic electron transport are represented by the drawings in the chloroplast and the respiratory electron transport chain is shown by the dark red oval in the mitochondrion. Gas fluxes are represented by dashed arrows. Acetyl CoA, acetyl coenzyme A; ATP, adenosine triphosphate; FADH_2 , flavin adenine dinucleotide; NADH, nicotinamide adenine dinucleotide; NADPH, nicotinamide adenine dinucleotide phosphate; PG, phosphoglycolate; PGA, phosphoglycerate.

have occurred since the Industrial Revolution probably led to large stimulations in photosynthesis (Polley *et al.*, 1993; Gerhart & Ward, 2010), but that future CO₂ increases may have less dramatic effects on plant carbon uptake, consistent with the saturating response to rising CO₂ noted in crop yield studies (Long *et al.*, 2006).

Much of our early information on how rising CO₂ alters plant carbon fluxes came from studies in growth chambers and glasshouses where CO₂ concentrations can be easily manipulated. While this approach answered a range of physiological questions about high CO₂ effects on plant carbon metabolism (Garbutt & Bazzaz, 1984; Sage *et al.*, 1989), it also has its limitations for understanding how plants and ecosystems will respond to elevated CO₂ in the field (Curtis & Wang, 1998). The need to grow plants in pots imposes an artificial rooting environment (McConnaughay *et al.*, 1993), and most glasshouse studies provide ample nutrients and water, conditions rarely found in nature (Poorter *et al.*, 2016). There are, however, ways to determine how high CO₂ affects vegetation in more realistic settings, including open-top chambers and Free Air CO₂ Enrichment (FACE) experiments. FACE studies, where vegetation grown in the field is surrounded by pipes blowing CO₂ over the plots, have explored the effects of elevated CO₂ on plant and ecosystem carbon dynamics in forests, deserts, crop fields and grassland ecosystems (e.g. Rogers *et al.*, 2004; McCarthy *et al.*, 2010; Smith *et al.*, 2014; Obermeier *et al.*, 2017). Determining the response of plants in these more natural systems when possible is important, as there can be significant differences in the results from studies between pot and field studies (Poorter *et al.*, 2016). The effect of elevated CO₂ on photosynthesis from FACE studies was > 50% lower than that from pot studies of crop species, with similar levels of disparity between the two types of experiments in terms of biomass and yield stimulations (Long *et al.*, 2006). Thus, while pot experiments evaluate physiological responses to CO₂ in a highly controlled setting, translating those results into ecologically realistic predictions of how vegetation will respond to rising CO₂ is best evaluated in the field.

The stimulation of photosynthesis in plants grown at elevated CO₂ is well characterized (Ainsworth & Rogers, 2007). Across a range of FACE experiments, maximum rates of A_{net} were 31% higher in the elevated CO₂ plots (Ainsworth & Long, 2004). While this figure is often used to describe the effect of increased CO₂ on photosynthesis, the same meta-analysis found that the mean degree of stimulation varied between plant functional types (PFTs), with trees showing the strongest response to CO₂ (a 47% increase in maximum photosynthesis) and forbs showing a weaker response (a 15% increase in maximum photosynthesis). Importantly, this stimulation is not necessarily constant over time, but tends to decrease as the duration of exposure to a high CO₂ environment increases (Leuzinger *et al.*, 2011; Wang *et al.*, 2012; Warren *et al.*, 2015). Over time, the accumulation of sugars in high-CO₂-grown leaves leads to a down-regulation of Rubisco concentrations, providing a negative feedback on photosynthesis (Moore *et al.*, 1999). This acclimation results in a lower degree of photosynthetic stimulation in plants grown at high CO₂ concentrations than would be expected from short-term exposure to elevated CO₂. Down-regulation of photosynthesis, or a weaker photosynthetic

response to elevated CO₂, is particularly common in plants grown in small pots or with low nutrient availability (Arp, 1991; Jablonski *et al.*, 2002) and often reflects the sink strength of the vegetation (Clough *et al.*, 1981; Ainsworth *et al.*, 2004). For example, *Eucalyptus* growing on phosphorus-poor soils showed only a 19% stimulation of maximum A_{net} when exposed to high CO₂ over 3 years (Ellsworth *et al.*, 2017), while sweetgum and loblolly pine trees grown at elevated CO₂ for three or more years in a fertile site showed 30–67% increases in maximum A_{net} (Herrick & Thomas, 2001; Ellsworth *et al.*, 2012). In the majority of cases, photosynthetic rates measured at the growth CO₂ are still stimulated in high-CO₂-grown plants compared to plants grown under current CO₂ despite this acclimation (Leakey *et al.*, 2009). However, in some studies, field-grown plants exposed to high CO₂ eventually have identical A_{net} at their growth CO₂ as control plants from ambient CO₂ plots (e.g. Norby *et al.*, 2010), negating the expectation of a CO₂ fertilization effect in these experiments.

Elevated CO₂ reduces stomatal conductance (g_s), which affects both the carbon and the water dynamics of vegetation (Medlyn *et al.*, 2001). Averaged across the FACE sites, increased growth CO₂ resulted in a 20% decrease in g_s (Ainsworth & Long, 2004), although in some studies, this reduction of g_s disappeared over time (Uddling *et al.*, 2009) or was not seen (Pathare *et al.*, 2017). The lower g_s in high-CO₂-grown vegetation partially offsets the stimulation of Rubisco carboxylation rates, because it increases resistance to CO₂ diffusion into the leaf and lowers C_i . The reduction in g_s of vegetation under high CO₂ environments could lead to considerable soil water savings (Volk *et al.*, 2000; Wullschlegel *et al.*, 2002; Fay *et al.*, 2012; Ukkola *et al.*, 2016; but see Pathare *et al.*, 2017), helping offset the higher evaporative demand of a warmer climate in the future and thereby promoting plant productivity (Fatichi *et al.*, 2016; Swann *et al.*, 2016). There is even evidence that traits affecting g_s have already adapted to the rise in CO₂ that has occurred since the Industrial Revolution, with a reduction in maximum g_s over the last century via decreases in stomatal density or stomatal pore size (Lammertsma *et al.*, 2011). However, in some studies, where the maximum leaf area carrying capacity has not been reached, plants grown under elevated CO₂ concentrations have larger canopies (Ainsworth & Long, 2004; Norby & Zak, 2011). If lower g_s is paired with more leaf area in a high CO₂ environment (Field *et al.*, 1995), these responses can cancel each other out in terms of water lost via transpiration per plant (Tor-ngern *et al.*, 2015; Knauer *et al.*, 2017; Jin *et al.*, 2018).

High CO₂ suppresses photorespiration, a process generally viewed as a wasteful side reaction of Rubisco. This opinion is bolstered by the enhanced productivity of some plant lines engineered with metabolic bypasses to circumvent photorespiration (Kebeish *et al.*, 2007; Maurino & Peterhansel, 2010). However, many photorespiratory mutants grow poorly in current CO₂ conditions (Timm & Bauwe, 2013), indicating that this process has an important role in plant carbon metabolism, and there is growing evidence that photorespiration provides stress tolerance to plants (Voss *et al.*, 2013). Photorespiration can be beneficial during drought stress or high light conditions, which both reduce the capacity of the Calvin–Benson cycle to consume the NADPH and ATP generated in photosynthetic electron

transport. This imbalance between photosynthetic electron transport rates and rates of the use of its products leads to increasing excitation pressure, photoinhibition and reactive oxygen species (ROS) formation; by consuming reducing equivalents, photorespiration can help relieve this acceptor limitation and ROS damage (Takahashi & Badger, 2011). Because low CO₂ concentrations induce a similar imbalance between photosynthetic electron transport and the Calvin–Benson cycle, high rates of photorespiration are also necessary to cope with low CO₂ conditions (Eisenhut *et al.*, 2017). Additionally, photorespiration is intimately connected with plant nitrogen cycling, as NH₂ is used to produce glycine and ammonium is then produced during the formation of serine. Photorespiration has been linked to increased nitrogen uptake capacity (Rachmilevitch *et al.*, 2004; Bloom *et al.*, 2010, 2012, 2014; Deller *et al.*, 2015; Busch *et al.*, 2018), particularly nitrate, posing the question of whether rising CO₂ may reduce plant nitrogen uptake when nitrate is the main nitrogen source available. This is particularly relevant for crop yield, because nitrate is the dominant soil nitrogen source for most crop plants in cultivated aerated soils (Crawford & Glass, 1998; Hawkesford *et al.*, 2012); by reducing nitrate assimilation, rising CO₂ concentrations may also threaten food quality by depleting crop protein concentrations (Bloom, 2009; Carlisle *et al.*, 2012). Cheng *et al.* (2012) showed that, across a range of studies, elevated CO₂ lowered nitrate uptake capacity by 16%, but had no impact on NH₄⁺ use. Recent work with an *Arabidopsis* mutant with impaired nitrate uptake activity found stronger reductions in growth of the mutant at high CO₂ than at lower CO₂ concentrations (Takatani *et al.*, 2014), consistent with an exacerbated reduction in the ability of the mutant to assimilate nitrate at elevated CO₂. Nitrate-preferring species may therefore show a weaker response to rising CO₂ than species that preferentially assimilate ammonium (Rubio-Asensio & Bloom, 2016). The degree to which increases in nitrogen use efficiency (i.e. the ratio of A_{net} to leaf N) due to rising CO₂ (Leakey *et al.*, 2009) will help compensate for reductions in nitrogen assimilation in nitrate-preferring species is unclear. If plant N demand declines proportionally with decreased N uptake capacity, these two responses may counterbalance one another.

The question of whether rising CO₂ will alter plant respiration rates is still open (Way *et al.*, 2015; Xu *et al.*, 2015). There is no immediate effect of high CO₂ on mitochondrial respiration rates (Amthor, 2000). However, in some studies, plants grown at elevated CO₂ have higher respiration rates than control plants (e.g. Wang *et al.*, 2001), in other studies, respiration rates decline (e.g. Curtis, 1996) and the remaining studies show no effect of growth CO₂ on respiration (e.g. Gauthier *et al.*, 2014). Decreased respiration rates in vegetation that develops at elevated CO₂ (e.g. Gifford *et al.*, 1985; Loreto *et al.*, 2001; Crous *et al.*, 2012; Ayub *et al.*, 2014) is often thought to be linked to decreased leaf N (Cotrufo *et al.*, 1998; Ainsworth & Long, 2004), associated with photosynthetic down-regulation and lower metabolic demands. However, Curtis (1996) found little evidence for this hypothesis in woody species, and reductions in respiration are not always correlated with reductions in leaf N (e.g. Haworth *et al.*, 2015). Cases where high CO₂ increases respiration (Thomas *et al.*, 1993; Wang *et al.*, 2001; Rogers *et al.*, 2004; Shapiro *et al.*, 2004; Markelz

et al., 2014) may be related to higher carbohydrate concentrations and hence a higher substrate availability for respiration (e.g. Rogers *et al.*, 2004; Tjoelker *et al.*, 2009). Li *et al.* (2013) found that while higher respiration rates in elevated CO₂-grown tomato were correlated with increased leaf carbohydrate concentrations, supplying leaves with extra sucrose had no effect on respiration rates. Instead, they noted an up-regulation of respiratory genes in plants grown at high CO₂, indicating that higher respiration rates were regulated at the transcriptional level, consistent with work by Markelz *et al.* (2014). Li *et al.* (2013) also found that high CO₂-grown leaves had more mitochondria, which agrees with earlier work in other species (Griffin *et al.*, 2001; Wang *et al.*, 2004). In other cases, an apparent increase in respiration in vegetation from elevated CO₂ can be explained by an increase in leaf mass per unit area (Aspinwall *et al.*, 2017). Taken together, the picture that emerges from these studies is that responses of respiration to changes in growth CO₂ are highly variable. We therefore currently lack a consistent theoretical basis for making strong predictions for how respiration will change in a high CO₂ world.

In natural ecosystems, the effect of the increases in CO₂ that have occurred over the last few decades can be assessed from several sources. Eddy covariance data can be used to measure net ecosystem exchange (NEE), the sum of the plant and microbial carbon fluxes in the ecosystem. NEE, in turn, reflects the balance between gross primary productivity (GPP) and ecosystem respiration (R_{eco} , which includes both autotrophic and heterotrophic respiration). At the ecosystem level, high CO₂ effects on photosynthesis (i.e. GPP) and respiration (i.e. R_{eco}) are likely to be more tightly coupled than in leaves or plants, particularly in sink-limited regions. This is because elevated CO₂ stimulates photosynthesis and carbohydrate production, but if the carbon is not used in growth or autotrophic respiration, it will predominantly be used in heterotrophic respiration, thereby increasing R_{eco} . As eddy covariance also estimates evapotranspiration, this method provides insight into how both carbon and water fluxes are responding to rising CO₂. Tree ring data can also be used to examine tree responses to changes in atmospheric CO₂ concentrations, through both estimates of growth and isotopic analyses of tree rings for water use efficiency (WUE, the ratio of A_{net} to transpiration). Work using eddy covariance data shows that rising CO₂ has stimulated both GPP and WUE in forests in the northern hemisphere since 1990 (Keenan *et al.*, 2013). By combining eddy covariance and tree ring isotopic data, Dekker *et al.* (2016) argued that WUE has increased by c. 48% over the 20th century, largely due to CO₂ effects on photosynthesis and g_s . By contrast, Frank *et al.* (2015) used tree rings to calculate WUE changes since 1900 and found a much smaller stimulation of 14–22% in European forests, with broadleaf species showing smaller increase in WUE than conifers. The large increases in WUE found by Keenan *et al.* (2013) and Dekker *et al.* (2016) have instigated debate about the actual extent of WUE stimulations by rising CO₂, as the values reported are much larger than those predicted by our knowledge of the physiological processes underlying WUE (Knauer *et al.*, 2017; Mastrotheodoros *et al.*, 2017). Some of the difference between measured changes in WUE- and CO₂-based predictions may be due to warming-related increases in vapor pressure deficit (VPD) that occur concurrently

with increasing CO₂, changes that also drive stomatal closure and thereby increase WUE (Ficklin & Novick, 2017). Regardless, these data highlight that climate change is already impacting the carbon and water dynamics of vegetation globally, emphasizing the need to understand the mechanisms generating these changes.

III. Rising temperatures and carbon metabolism

Rising CO₂ predominantly affects plants through its effects on Rubisco biochemistry and stomatal conductance, but **increasing temperatures impact almost every biological process in a plant, including morphogenesis, membrane lipid fluidity and composition, and cambial activity** (Pearcy, 1978; Falcone *et al.*, 2004; Begum *et al.*, 2013; Quint *et al.*, 2016). Thus, while the effects of warming on photosynthesis, photorespiration and respiration can be evaluated individually, the diverse impacts of higher temperatures on other metabolic processes are likely to feed back on carbon metabolism in ways that we do not currently appreciate.

Increasing temperatures stimulate enzyme activity rates (recently reviewed by Arcus *et al.*, 2016), explaining most of the **immediate effects of temperature on leaf carbon fluxes in moderate thermal environments** (i.e. *c.* 5–40°C for most C₃ species). For example, **respiration increases exponentially with increasing leaf temperature** (Hofstra & Hesketh, 1969; Clark & Menary, 1980; Hesketh *et al.*, 2016), up to a species- and environment-dependent maximum temperature of 48–60°C (Tjoelker *et al.*, 2001; Hesketh *et al.*, 2014; Weerasinghe *et al.*, 2014), **largely due to direct impacts of temperature on enzyme function. As leaf temperatures increase, photorespiration rates rise faster than do photosynthetic rates** (Long, 1991). **The greater stimulation of photorespiration than photosynthesis at higher temperatures occurs for two reasons. First, the specificity of Rubisco for CO₂ vs O₂ decreases at higher temperatures, making it more likely that an oxygenation reaction will occur** (Ku & Edwards, 1977a; Jordan & Ogren, 1984). **Second, the solubility of O₂ decreases less rapidly than does the solubility of CO₂ as temperatures rise** (Ku & Edwards, 1977b), so there is **relatively more O₂ available to react with in warm conditions**. The different temperature sensitivities of photosynthesis, photorespiration and respiration combine to generate an **A_{net} thermal response curve that usually peaks between 25 and 30°C in C₃ photosynthetic species** (Sage & Kubien, 2007; Yamori *et al.*, 2014), although some C₃ species can maintain high A_{net} at temperatures as high as 45°C (e.g. Lawson *et al.*, 2014).

Given that climate warming will increase both the mean temperatures experienced by leaves and the risk of extreme heat waves (Coumou & Robinson, 2013; Yao *et al.*, 2013), understanding what limits net carbon uptake at high temperatures will become increasingly important. Two main biochemical hypotheses have been put forward to explain why photosynthesis decreases above the thermal optimum of A_{net} : Rubisco activase heat lability and electron transport declines. The first hypothesis is based on the decline in the activation state of Rubisco as leaf temperatures increase (Crafts-Brandner & Salvucci, 2000; Yamori & Von Caemmerer, 2009). Even when Rubisco acts as a carboxylase, misfire products are frequently produced and these must be removed from the active site by Rubisco activase (recently reviewed

by Carmo-Silva *et al.* (2015) and Bracher *et al.* (2017)). As Rubisco's catalytic activity and production of misfire products increases with rising temperature, so does the role of Rubisco activase in maintaining Rubisco function. Rubisco activase is relatively heat labile (Crafts-Brandner & Salvucci, 2000; Salvucci *et al.*, 2004), so the ability of Rubisco activase to maintain the activation state of Rubisco is expected to decline at high temperatures, and plants expressing a more thermotolerant Rubisco activase have higher A_{net} at high temperatures (Itzhak Kurek *et al.*, 2007; Kumar *et al.*, 2009). However, the effect of Rubisco activase on A_{net} at high temperatures is often small (e.g. Yamori & Von Caemmerer, 2009; Yamori *et al.*, 2012). The second hypothesis states that a decline in photosynthetic electron transport rates, and the production of ATP and NADPH, at high temperatures limits photosynthesis (Schrader *et al.*, 2004; Wise *et al.*, 2004). Teasing out the initial cause of the decrease in A_{net} at high temperatures is complicated by the fact that a reduction in photosynthetic electron transport decreases ATP production, thereby limiting the activity of Rubisco activase, which requires ATP (Cen & Sage, 2005). Recently, Busch & Sage (2017) showed that combining gas exchange and chlorophyll fluorescence measurements at varied CO₂ and O₂ conditions can pinpoint the biochemical limitation of A_{net} , an approach building on that of Long & Bernacchi (2003). While this approach is time-consuming, establishing the limitation to A_{net} above the photosynthetic thermal optimum in a range of species should provide insight into whether one of these limitations is dominant.

The effect of increased temperature on carbon metabolism differs depending on the timescale over which the warming is imposed. When plants are grown at elevated temperatures, both photosynthesis and respiration usually acclimate (Smith & Dukes, 2017). For most C₃ plants, this involves an increase in the thermal optimum of A_{net} (Berry & Björkman, 1980; Yamori *et al.*, 2014) and higher maximum Rubisco carboxylation rates at the growth temperature (Smith & Dukes, 2017). However, these shifts do not necessarily translate into improved A_{net} at the growth temperature (A_{growth}) when comparing a warm-grown plant with a plant grown at a lower, control temperature (Way & Yamori, 2014). In many cases, particularly in evergreen woody species, A_{growth} is lower in the plant grown at elevated temperature, implying that acclimation cannot fully compensate for the change in temperature in some species (Way & Yamori, 2014).

In contrast to photosynthesis, respiration tends to acclimate to increases in growth temperature to a similar degree in species from different biomes and PFTs (Slot & Kitajima, 2015; Smith & Dukes, 2017). This acclimation is evidenced by a lower respiration rate in plants grown at higher temperatures compared to control plants when both are measured at a common temperature (Atkin & Tjoelker, 2003). Plants grown at higher temperatures may reduce the Q_{10} for respiration (the increase in respiration for a 10°C increase in leaf temperature) compared to control plants, and/or have a lower respiration rate at low leaf temperatures (Atkin & Tjoelker, 2003). Thermal acclimation of respiration can lead to perfect homeostasis, where respiration rates at the respective growth temperatures (R_{growth}) are identical for plants grown in different thermal conditions (Atkin *et al.*, 2005), but partial homeostasis of

respiration is more common (Slot & Kitajima, 2015) and in some studies, no significant effect of growth temperature on respiration is found (e.g. Gauthier *et al.*, 2014). While thermal acclimation can reduce respiration by 80% compared to control plants (Reich *et al.*, 2016), the mechanisms leading to thermal acclimation of respiration are not known. Reductions in respiration under elevated temperature are often correlated with decreases in leaf nitrogen (Tjoelker *et al.*, 1999b; Crous *et al.*, 2017) and changes in mitochondrial density or structure (e.g. Armstrong *et al.*, 2006). Thermal acclimation of respiration also often involves respiratory substrate limitation and adenylate control on respiration rates (Atkin & Tjoelker, 2003). However, while we know that these processes are often involved in respiratory thermal acclimation, a general framework to mechanistically explain the long-term response of respiration to growth temperature is currently lacking.

As with rising CO₂, eddy covariance data can provide insight into how the effects of temperature on plant carbon dynamics scale to the ecosystem. Because photosynthesis and respiration in plants both acclimate to prevailing temperatures, and these fluxes constitute the majority of the CO₂ signal measured by eddy covariance, it is perhaps unsurprising that the thermal response of NEE is correlated with regional temperature regimes, with NEE peaking at a higher optimum temperature in warmer locations (Niu *et al.*, 2012). Thermal acclimation can also be detected in the NEE signal, with the NEE thermal optimum increasing in warmer years at a given site. While this NEE thermal acclimation was related to both increases in the thermal optimum of GPP and decreases in the Q_{10} of R_{eco} , the photosynthetic shift accounted for more of the change in the NEE thermal response (29%) than did changes in respiration (7%) (Niu *et al.*, 2012). Thus, even at the ecosystem level, carbon metabolism is likely to shift in a concerted manner as

temperatures increase, although this acclimation process may not maintain NEE at a similar value as temperatures warm at a particular site.

IV. Thermal acclimation responses of carbon metabolic processes can be best understood when studied together

While it has long been known that variation in A_{net} and respiration tend to be correlated (Gifford, 1995; Reich *et al.*, 1998; Whitehead *et al.*, 2004; Atkin *et al.*, 2007), thermal acclimation of photosynthesis and respiration are often studied separately (although not always, e.g. Way & Yamori, 2014; Smith & Dukes, 2017). Because of the coupling between these physiological processes, plants that show strong thermal acclimation of photosynthesis might also be expected to show strong acclimation of respiration under warming. One metric of this is the ratio of A_{net} to dark respiration, which is homeostatic across growth temperatures in some studies (e.g. Loveys *et al.*, 2003) but not others (e.g. Way & Sage, 2008).

To evaluate how A_{net} and leaf dark respiration acclimate to changes in growth temperature, we collated information from 58 studies that grew plants at two or more temperatures and then measured net photosynthesis and leaf dark respiration at the growth temperature (A_{growth} and R_{growth} , respectively) (Appendix A1). Studies were restricted to experiments in controlled environments (i.e. glasshouses and growth chambers); while this excludes field studies, we focused on data where growth temperatures could be clearly defined, building on the database used in Yamori *et al.* (2014) and Way & Yamori (2014). Data were extracted directly from the text or taken from figures using DataThief III (v.1.5, www.datathief.org). Because not every study had measurements of

Table 1 Parameter estimates from the linear regression model (LM) of the relationship between changes in leaf dark respiration rate measured at growth temperature (ΔR_g) as a function of changes in growth temperature (ΔT_g); and generalized least squares models (GLS) of the relationship between changes in net CO₂ assimilation rate measured at growth temperature (ΔA_g) and ΔT_g , between ΔR_g and ΔA_g , and the relationship between ΔT_g and the ratio of ΔA_g to ΔR_g ($\Delta A_g / \Delta R_g$)

Model used	Parameters	PFT	Slope	Intercept	σ	P -value (slope)	P -value (intercept)	R^2	F	df	Overall model P -value
GLS	ΔA_g vs ΔT_g	C ₃	−0.54	−5.49	6.03	<0.001	<0.001	0.05		316	<0.001
		C ₄	−0.39	3.95		0.003	0.13				
		Deciduous	−0.06	3.50		0.28	0.33				
		Evergreen	0.56	5.58		0.03	<0.001				
LM	ΔR_g vs ΔT_g	C ₃	0.01	−0.04	0.62	0.67	0.92	0.32	7.01	103	<0.001
		C ₄	−0.03	0.87		0.90	0.73				
		Deciduous	0.19	−0.21		0.009	0.75				
		Evergreen	0.02	−0.08		0.58	0.84				
GLS	ΔR_g vs ΔA_g	C ₃	−0.004	0.12	0.58	0.5	0.16	0.13		105	<0.001
		C ₄	0.16	−0.04		0.058	0.86				
		Deciduous	0.2	0.59		<0.001	0.07				
		Evergreen	0.06	0.05		0.019	0.49				
GLS	$\Delta A_g / R_g$ vs ΔT_g	C ₃	−0.09	7.46	36.66	0.95	0.74	0.04		104	0.89
		C ₄	−0.95	6.48		0.94	0.96				
		Deciduous	−0.70	3.20		0.87	0.93				
		Evergreen	−2.29	11.72		0.32	0.64				

The main effect of all models included the interaction between the response variable and plant functional type (PFT: C₃ herbs, C₄ species, deciduous woody species and evergreen woody species). σ , residual standard error; F , F -statistics; df, degrees of freedom.

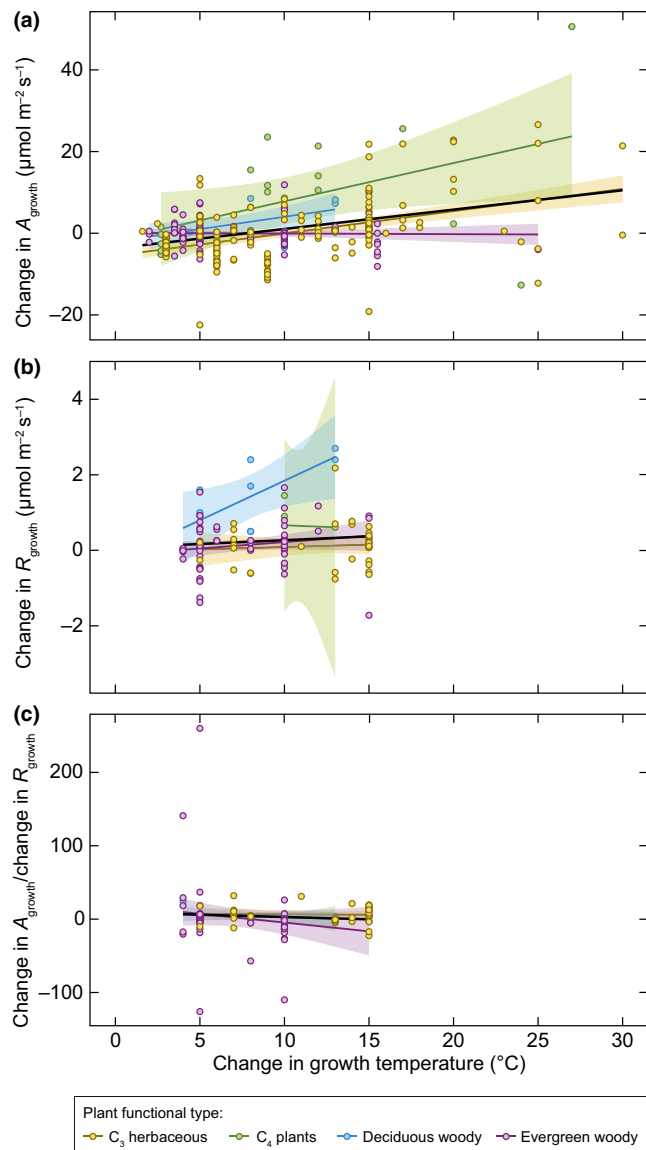


Fig. 2 The relationship between the change in growth temperature (T_{growth}) and changes in (a) net CO_2 assimilation rate at T_{growth} (A_{growth}), (b) leaf dark respiration rate at T_{growth} (R_{growth}) and (c) the ratio of A_{growth} to R_{growth} . Plant functional types (represented by different colours): C_3 herbaceous species, C_4 species, deciduous woody plants and evergreen trees. Circles represent individual observations, lines are regressions and shaded regions represent 95% confidence intervals.

both A_{growth} and R_{growth} , this generated 316 contrasts for A_{growth} from 57 studies, 111 contrasts from 22 studies for R_{growth} , and 105 contrasts from 21 studies where both A_{growth} and R_{growth} were assessed on the same material, allowing us to calculate the ratio of A_{growth} to R_{growth} . All data were expressed on a $\mu\text{mol CO}_2 \text{ m}^{-2} \text{ s}^{-1}$ basis and were converted as needed into these units using relevant data from the paper of interest. As our goal was to determine how carbon fluxes varied with continuous variation in growth temperature and changes in growth temperature, we took the analytical approach of Way & Oren (2010). Thus, unlike other types of meta-analyses determining an overall effect size, we did not weight the data by sample size. In total, 83 plant species (Supporting Information

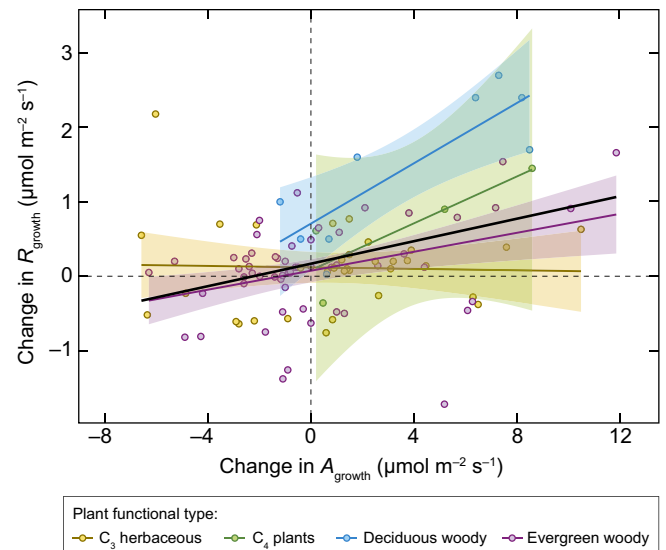


Fig. 3 The relationship between changes in net photosynthesis and leaf dark respiration measured at the growth temperature (A_{growth} and R_{growth} , respectively). Circles represent individual observations, lines are regressions and shaded regions represent 95% confidence intervals. Plant functional types (represented by different colours): C_3 herbaceous species, C_4 species, deciduous woody plants and evergreen trees.

Table S1) belonging to each of four PFTs (C_3 herbaceous, C_4 , deciduous woody and evergreen woody) were included.

The relationship between changes in R_{growth} in response to changes in growth temperature (T_{growth}) was analyzed using a linear regression model with the explanatory variable, PFT, and the interaction between the explanatory variable and PFT. The relationship between changes in A_{growth} in response to T_{growth} , the relationship between changes in A_{growth} and changes in R_{growth} , and between the ratio of A_{growth} and R_{growth} ($A_{\text{g}}/R_{\text{g}}$ ratio) with changes in T_{growth} were tested using generalized least squares models to account for deviations from normality present in these relationships, and included the response variables, PFT, and their interaction. All analyses were performed in R (R Core Team, 2013, v. 3.4.3).

Consistent with previous reports (Way & Yamori, 2014), an increase in T_{growth} was correlated with an increase in A_{growth} in some PFTs (Fig. S1a–d). As the change in T_{growth} increased, the change in A_{growth} increased in C_3 herbaceous plants ($P < 0.001$) and C_4 species ($P = 0.003$), but remained constant in deciduous woody species ($P = 0.28$), and declined in evergreen trees ($P = 0.03$) (Table 1; Fig. 2a). Across the same dataset, R_{growth} increased significantly with warming only in deciduous trees ($P = 0.009$), remaining constant in C_3 herbs ($P = 0.67$), C_4 ($P = 0.90$) and evergreen woody ($P = 0.58$) species (Table 1; Figs 2b, S1e–h), indicating a tendency for partial or complete homeostasis of respiration across growth temperatures, as seen in Slot & Kitajima (2015).

More interestingly, the data can be studied to evaluate patterns of concurrent shifts in A_{growth} and R_{growth} . The ratio of A_{growth} to R_{growth} was constant across a wide range of growth temperatures in all PFTs, indicating that most species are able to maintain a homeostatic balance between these processes ($0.32 < P < 0.95$;

Table 1; Fig. 2c). The photosynthetic and respiratory data can also be examined by plotting them against each other. There was a positive relationship between changes in R_{growth} and changes in A_{growth} in response to warming in C_4 species ($P=0.058$), and deciduous ($P<0.001$) and evergreen trees ($P=0.019$), although there was no significant relationship between the parameters in C_3 herbaceous species ($P=0.5$), where the relationship was constrained by relatively small changes in R_{growth} in response to changes in T_{growth} (Table 1; Fig. 3). Thus, plants that have higher A_{net} in warm growth conditions also tend to show only partial homeostasis of respiration, implying that some of the extra fixed carbon in warm-grown plants is being consumed via elevated respiration rates or that higher respiration rates stimulate A_{net} in warm conditions. This also indicates that in plants where A_{net} is suppressed by warming, perhaps by sink limitations, respiration tends to overcompensate (i.e. thermal acclimation reduces respiration rates more than is needed to maintain homeostasis). This overcompensation is relatively uncommon, occurring in only 10 of 105 contrasts in the meta-analysis by Slot & Kitajima (2015), but our data show that this phenomenon may be linked to reductions in carbon availability for respiration at higher growth temperatures. Overall, our analysis shows that thermal acclimation patterns in photosynthesis and respiration are probably operating in an interlinked manner, emphasizing the need to consider these physiological processes in tandem.

V. Will elevated CO_2 offset warming-induced changes in carbon metabolism?

Many of the impacts of rising CO_2 on plant carbon metabolism are offset by increasing temperatures, so these global change factors must be assessed together to build a realistic picture of how a changing climate will impact plants (Norby & Luo, 2004). For example, because the suppression of photorespiration by elevated CO_2 is temperature-dependent (Long, 1991), CO_2 fertilization is expected to be stronger in the tropics than in cooler climates (Hickler *et al.*, 2008; Baig *et al.*, 2015). High CO_2 also increases the thermal optimum of A_{net} (Sage & Kubien, 2007) and can increase the heat tolerance of photosynthesis in C_3 plants (Taub *et al.*, 2000; Wang *et al.*, 2008; Rodrigues *et al.*, 2016). However, rising CO_2 and warming can have compounding effects on plant carbon dynamics. Elevated CO_2 concentrations decrease g_s (Ainsworth & Long, 2004), as do the high VPD conditions that normally accompany elevated temperatures (Franks & Farquhar, 1999; Oren *et al.*, 1999). Not only will lower g_s reduce A_{net} by restricting CO_2 availability for photosynthesis (Franks & Farquhar, 1999; Oren *et al.*, 1999), but it also warms leaves by reducing latent heat loss (Long *et al.*, 2004; Kimball & Bernacchi, 2006). These high leaf temperatures further stimulate photorespiration rates and may also expose leaves grown under future climates to critically high temperatures. In the field, trees grown under elevated CO_2 shed more leaves during a hot drought than did control trees, which correlated with lower g_s in the high CO_2 trees and probably increases in damaging, high leaf temperatures (Warren *et al.*, 2011). The net effect of global change on carbon dynamics will therefore depend on plant responses to concurrent changes in CO_2 and temperature. For example, even

though rising CO_2 will suppress photorespiration as temperatures increase, eliminating photorespiration could still increase gross photosynthesis by 12–55% in a future warmer and high CO_2 climate (Walker *et al.*, 2016).

The clearest evidence of how rising CO_2 and temperature will alter plant carbon fluxes therefore comes from studies that manipulate both factors. A meta-analysis by Wang *et al.* (2012) showed that the effect of elevated CO_2 on A_{net} does not vary between plants grown at ambient and elevated temperatures, with high CO_2 stimulating A_{net} by 14–20%. There was some indication that elevated CO_2 can alter A_{net} in plants exposed to heat stress, with positive CO_2 effects on legumes and negative effects on C_4 species (Wang *et al.*, 2012). However, the average responses of photosynthesis to CO_2 and temperature in meta-analyses such as Wang *et al.* (2012) do not necessarily tell the whole story. Instead, these data imply that plant carbon flux responses to temperature (which vary across species) may be more critical for understanding future carbon cycling than responses to CO_2 (which are largely consistent across studies). For example, elevated CO_2 increased A_{net} in field-grown soybean, but warming reduced A_{net} , so the combination of warming with high CO_2 led to similar or even lower rates of A_{net} than in high CO_2 plots alone (Ruiz-Vera *et al.*, 2013). A similar effect has been seen in other studies (Wang *et al.*, 1995). In contrast, in studies where A_{net} is not reduced by warming, either because the species thermally acclimates or the degree of warming imposed is small, elevated CO_2 stimulates A_{net} in the combined CO_2 and temperature treatments (Teskey, 1997; Lewis *et al.*, 2001, 2015; Ghannoum *et al.*, 2010; Edwards *et al.*, 2017; Lamba *et al.*, 2018). So while high CO_2 may stimulate A_{net} across a wide range of temperatures, plants may still have decreased carbon uptake compared to current growth conditions.

Given that thermal acclimation of respiration is common while the impact of rising CO_2 on respiration is mixed, we might expect that growth temperature effects will dominate when the two factors are changed concurrently. This is indeed what we see in many studies. Tjoelker *et al.* (1999a,b) showed that the effects of temperature and CO_2 on respiration were largely independent in a suite of boreal tree species, with warming reducing respiration rates and high CO_2 having little effect on respiration in most species. These conclusions are similar to those from another boreal tree study, where the effect of growth temperature on respiration was greater than that of growth CO_2 (Zha *et al.*, 2003). Ziska & Bunce (1993) found that respiration (on a leaf area basis) was suppressed by high CO_2 , but only in the lowest temperature treatment, while there was no effect of CO_2 on respiration in plants grown between 20 and 30°C. Other studies find only weak effects of CO_2 and warming on respiratory fluxes (e.g. Tingey *et al.*, 2007; Kroner & Way, 2016; Lamba *et al.*, 2018), and some find the effect of CO_2 to be stronger than that of temperature (Lamba *et al.*, 2018). While there are few studies addressing this question, the temperature sensitivity of respiration appears to be similar in vegetation grown under current conditions and future conditions of combined elevated temperature and CO_2 concentrations (Gauthier *et al.*, 2014; Kroner & Way, 2016; Lamba *et al.*, 2018).

Combining the results from many studies on how plant carbon fluxes are altered by warming and high CO_2 allows for the type of

generalizations necessary for modeling future plant carbon fluxes. Dynamic global vegetation models rely on photosynthetic and respiratory parameters to estimate plant–atmosphere carbon exchange. In many of these models, species are grouped into PFTs (Poulter *et al.*, 2011), as species within these groups may respond to global change in similar ways. However, while some studies find similar responses of carbon dynamics across species to warming and CO₂ (Xu *et al.*, 2014), the variation in how species respond to climate treatments can be substantial, even within a single PFT (Reich *et al.*, 1998). When both Scots pine and Norway spruce were grown at a range of elevated temperatures and CO₂ concentrations, pine showed thermal acclimation of A_{net} and respiration, and thus maintained high net carbon uptake rates at higher temperatures, while A_{net} and respiration showed little acclimation to either CO₂ or warming in spruce, leading to a suppression of net carbon gain in warm-grown spruce trees (Kurepin *et al.*, 2018). As we move forward, it is therefore important to consider not only the mean responses on plant carbon fluxes to climate change, but also the extreme responses, especially when they occur in species with outsized ecological or agricultural impact.

VI. No plant is an island: water and nutrient limitations define plant responses to climate drivers

When water or nutrients are limiting, as is common in terrestrial ecosystems and many agricultural settings, the positive effects of rising CO₂ and warming are likely to be lower than those predicted from well-watered and fertilized systems. For example, elevated CO₂ had no impact on biomass of a temperate grassland when water and nitrogen were both limiting (Reich *et al.*, 2014), the ability of a temperate forest to accumulate carbon under high CO₂ was limited by both soil fertility and water availability (Oren *et al.*, 2001), and the impacts of elevated CO₂ and temperature on photosynthesis and respiration were erased during drought in *Eucalyptus* (Duan *et al.*, 2013). Here we briefly review some of the recent work on how photosynthetic, photorespiratory and respiration responses to CO₂ and temperature are affected by water and nutrient availability.

The impact of elevated CO₂ on plant carbon metabolism is predicted to be greatest in dry conditions where reductions in photosynthesis are primarily due to low g_s and C_i (Drake *et al.*, 1997). While this is seen in some studies (Roden & Ball, 1996; Wullschlegel *et al.*, 2002; Robredo *et al.*, 2007), in others, the effect of elevated CO₂ on photosynthesis is actually reduced in dry conditions (e.g. Gunderson *et al.*, 2002). This may be partly due to the different ways that species can respond to rising CO₂ when water availability varies. In dry regions, increasing CO₂ over the past century is linked to increasing WUE (i.e. a higher ratio of A_{net}/g_s), while moister regions show an increase in C_i , implying that g_s is not reduced to the same extent in wet sites as it is in dry sites by high CO₂ (Drake *et al.*, 2017). Importantly, high CO₂ may also alter the way in which plants respond to drought at a physiological and biochemical level. Soybeans grown at high CO₂ were more sensitive to abscisic acid, a plant hormone that induces stomatal closure, so that C_i declined more rapidly in response to water stress in high CO₂ plants than control plants (Gray *et al.*, 2016). In the

same study, the direct reduction in g_s and transpiration by elevated CO₂ was partly offset by a larger canopy size, while lower g_s increased leaf temperatures and therefore the leaf to air VPD, driving even more transpiration (Gray *et al.*, 2016). Taken together, these changes in leaf function and canopy structure meant that the stimulation of growth and yield in soybeans under high CO₂ in the field diminished or disappeared during droughts (Gray *et al.*, 2016).

Water stress should also enhance the impacts of warming on plant carbon metabolism, partly because drought reduces evaporative cooling, and partly because low g_s during water stress reduces C_i , which stimulates photorespiration (Feller, 2016). Some of these effects can be seen at a large scale. In a tropical rainforest, GPP was reduced 10% in a hot, dry El Niño year, contributing to a weaker forest carbon sink (Cavaleri *et al.*, 2017). Similarly, unusually warm and dry conditions in large parts of North America in 2012 promoted early budburst and therefore enhanced spring carbon uptake, but decreased summer GPP through heat and drought effects, with the depletion of soil moisture being exacerbated by the earlier leaf development in the spring (Wolf *et al.*, 2016). These effects of temperature and water can also be seen at the global scale. Summer warming tends to stimulate net primary productivity (NPP) in high-latitude northern regions, while decreasing it in other areas of the globe where hotter summers are also dry (Xia *et al.*, 2014). There can also be positive interactions between warming and drought stress with regard to carbon metabolism (Killi *et al.*, 2017). Water stress can provide photosynthetic heat stress tolerance (Havaux, 1992, 1993), as both heat and drought stress alter chloroplast membrane composition in similar manners, facilitating cross-protection between drought and warming. These changes in membrane composition may similarly underlie drought-related modifications of the temperature response of respiration. In *Eucalyptus* grown under elevated CO₂, elevated temperatures and water stress, the temperature at which respiration peaked before declining was increased in water-stressed plants (Gauthier *et al.*, 2014).

Soil nitrogen availability could significantly impact the ability of plants to respond to rising CO₂ by altering soil nitrogen dynamics (Díaz *et al.*, 1993; Reich *et al.*, 2006) or by limiting the nitrogen supply needed to build nitrogen-rich tissues at a rate that matches the CO₂ supply. Elevated CO₂ effects on photosynthesis (and growth) were therefore expected to diminish over time in the field, an idea known as the Progressive Nitrogen Limitation (PNL) hypothesis (Luo *et al.*, 2004, 2006). Recent work has instead shown that gross nitrogen immobilization and mineralization rates in soils are stimulated to a similar degree by elevated CO₂ in FACE studies (Rütting & Andresen, 2015). Elevated CO₂ stimulates plant nitrogen acquisition in experiments where growth is enhanced by high CO₂ (Luo *et al.*, 2006; Finzi *et al.*, 2007; Feng *et al.*, 2015), possibly because plants can explore larger soil volumes to access more nitrogen (Finzi *et al.*, 2007). Thus, while elevated CO₂ decreased leaf nitrogen across a range of FACE studies, growth stimulations were relatively consistent over a decade or so, and there was little evidence for PNL (Feng *et al.*, 2015). In the FACE studies where growth responses to elevated CO₂ were negative or only weakly positive, nitrogen acquisition was instead decreased by high

CO₂ (Feng *et al.*, 2015), implying that growth declines may be related to low photorespiration rates suppressing nitrate uptake capacity (Bloom *et al.*, 2010, 2014). CO₂ effects on nitrogen have also been linked to mycorrhizal status. Terrer *et al.* (2016) showed that elevated CO₂ increases biomass more strongly in ectomycorrhizal plants than in arbuscular mycorrhizal species, a result they attribute to a greater nitrogen supply from ectomycorrhizae to their host plants.

While we know that changes in leaf nitrogen are often strongly correlated with changes in carbon metabolism in plants grown under elevated temperatures (e.g. Tjoelker *et al.*, 1999a; Lewis *et al.*, 2004), surprisingly few studies have directly assessed how nitrogen supply alters the effect of warming on plant carbon metabolism. The little data we have indicate that while warming and high nitrogen availability can separately increase A_{net} , combining these treatments further increased photosynthetic performance in pine seedlings, but reduced A_{net} compared to the warming treatment in spruce (Zhao & Liu, 2009). More data are needed before any broad-scale conclusions can be drawn regarding the interaction between nitrogen availability and rising temperatures.

VII. Conclusions

It is important to remember that changes to the carbon fluxes discussed here do not necessarily lead to changes in biomass (Fatichi *et al.*, 2014; Körner, 2015), because carbon can be lost through other venues, such as volatile organic carbon and soil exudates. For example, Ellsworth *et al.* (2017) showed that A_{net} was stimulated by 19% in high CO₂ but tree above-ground productivity did not increase. Thus, while both A_{net} and growth tend to be impacted by combined CO₂ and temperature in a similar manner (Dieleman *et al.*, 2012; Baig *et al.*, 2015), changes in growth may be related to climate change effects on traits other than photosynthetic rates per se. High CO₂ can promote faster development of spring photosynthetic capacity, as can warming (Linkosalo *et al.*, 2017), highlighting the need to consider how climate alters photosynthetic phenology when comparing studies that measure growth and carbon metabolism. Perhaps even more importantly, plant growth (and the cell division and elongation that underlies growth) is temperature-dependent, and the carbon demand from growth may drive photosynthetic rates, rather than the other way around (Körner, 2015).


Despite these caveats, the impact of elevated CO₂ and warming on growth responses is largely determined via shifts in photosynthesis, photorespiration and respiration, which include both carbon sources and sinks. Plant carbon metabolism underpins the ability of plants to obtain the carbon they need to grow and produce the seeds we consume in major crop species. There has thus been considerable interest in finding ways to improve plant carbon uptake to increase food productivity and combat climate change, including modifying photoprotective mechanisms in crop canopies (Kromdijk *et al.*, 2016), inserting photorespiratory by-passes into plants (Kebeish *et al.*, 2007), improving the kinetics of Rubisco carboxylation (Sharwood *et al.*, 2016), and engineering synthetic carbon fixation pathways into leaves (Bar-Even, 2018). Understanding the

combined effects of rising temperatures and CO₂ concentrations on plant carbon metabolism, particularly in the context of changing water and nutrient availability, is critical for the success of these efforts and for predicting the impact of climate change on vegetation carbon fluxes. We therefore advocate for the need to expand our studies of plant carbon metabolic processes under combined CO₂ and temperature, to provide the information we need to guide strategies for improving plants for a future climate. Our results also highlight the need to address the responses of photosynthesis, photorespiration and respiration to climate change in a concerted way, to provide broad insights into climate change effects on carbon metabolism and to open new avenues for mitigating and adapting to the impacts of rising CO₂ and temperatures on vegetation.

Acknowledgements

We thank three anonymous reviewers for constructive comments on an earlier draft of the manuscript. We also thank Romney David Smith for producing Fig. 1. D.A.W. is grateful for financial support from the Canadian Natural Sciences and Engineering Research Council, and an Ontario Ministry of Research, Innovation and Science Early Career Award. A.G.D. was supported by CNPQ (Conselho Nacional de Desenvolvimento Científico e Tecnológico – Brasil), reference #200091/2015-8.

ORCID

André Galvao Duarte  <http://orcid.org/0000-0001-5172-7240>

References

- Ainsworth EA, Long SP. 2004. What have we learned from 15 years of free-air CO₂ enrichment (FACE)? A meta-analytic review of the responses of photosynthesis, canopy properties and plant production to rising CO₂. *New Phytologist* 165: 351–372.
- Ainsworth EA, Rogers A. 2007. The response of photosynthesis and stomatal conductance to rising [CO₂]: mechanisms and environmental interactions. *Plant, Cell & Environment* 30: 258–270.
- Ainsworth EA, Rogers A, Nelson R, Long SP. 2004. Testing the ‘source–sink’ hypothesis of down-regulation of photosynthesis in elevated [CO₂] in the field with single gene substitutions in *Glycine max*. *Agricultural and Forest Meteorology* 122: 85–94.
- Amthor JS. 2000. Direct effect of elevated CO₂ on nocturnal *in situ* leaf respiration in nine temperate deciduous tree species is small. *Tree Physiology* 20: 139–144.
- Amthor JS, Baldocchi DD. 2001. Terrestrial higher plant respiration and net primary production. In: Roy J, Saugier B, Mooney HA, eds. *Terrestrial global productivity*. San Diego, CA, USA: Academic Press, 33–59.
- Arcus VL, Prentice EJ, Hobbs JK, Mulholland AJ, Van der Kamp MW, Pudney CR, Parker EJ, Schipper LA. 2016. On the temperature dependence of enzyme-catalyzed rates. *Biochemistry* 55: 1681–1688.
- Armstrong AF, Logan DC, Tobin AK, O’Toole P, Atkin OK. 2006. Heterogeneity of plant mitochondrial responses underpinning respiratory acclimation to the cold in *Arabidopsis thaliana* leaves. *Plant, Cell & Environment* 29: 940–949.
- Arp WJ. 1991. Effects of source–sink relations on photosynthetic acclimation to elevated CO₂. *Plant, Cell & Environment* 14: 869–875.
- Aspinwall MJ, Jacob VK, Blackman CJ, Smith RA, Tjoelker MG, Tissue DT. 2017. The temperature response of leaf dark respiration in 15 provenances of *Eucalyptus grandis* grown in ambient and elevated CO₂. *Functional Plant Biology* 44: 1075–1086.

- Atkin OK, Bruhn D, Hurry VM, Tjoelker MG. 2005. Evans Review No. 2: The hot and the cold: unravelling the variable response of plant respiration to temperature. *Functional Plant Biology* 32: 87–105.
- Atkin OK, Scheurwater I, Pons TL. 2007. Respiration as a percentage of daily photosynthesis in whole plants is homeostatic at moderate, but not high, growth temperatures. *New Phytologist* 174: 367–380.
- Atkin OK, Tjoelker MG. 2003. Thermal acclimation and the dynamic response of plant respiration to temperature. *Trends in Plant Science* 8: 343–351.
- Ayub G, Zaragoza-Castells J, Griffin KL, Atkin OK. 2014. Leaf respiration in darkness and in the light under pre-industrial, current and elevated atmospheric CO₂ concentrations. *Plant Science* 226: 120–130.
- Baig S, Medlyn BE, Mercado LM, Zaehle S. 2015. Does the growth response of woody plants to elevated CO₂ increase with temperature? A model-oriented meta-analysis. *Global Change Biology* 21: 4303–4319.
- Bar-Even A. 2018. Daring metabolic designs for enhanced plant carbon fixation. *Plant Science* 273: 71–83.
- Beer C, Reichstein M, Tomelleri E, Ciais P, Jung M, Carvalhais N, Rödenbeck C, Arain MA, Baldocchi D, Bonan GB *et al.* 2010. Terrestrial gross carbon dioxide uptake: global distribution and covariation with climate. *Science* 329: 834–838.
- Begum S, Nakaba S, Yamagishi Y, Oribe Y, Funada R. 2013. Regulation of cambial activity in relation to environmental conditions: understanding the role of temperature in wood formation of trees. *Physiologia Plantarum* 147: 46–54.
- Berry J, Björkman O. 1980. Photosynthetic response and adaptation to temperature in higher plants. *Annual Review of Ecology and Systematics* 31: 491–543.
- Bloom AJ. 2009. As carbon dioxide rises, food quality will decline without careful management. *California Agriculture* 63: 67–72.
- Bloom AJ, Asensio JSR, Randall L, Rachmilevitch S, Cousins AB, Carlisle EA. 2012. CO₂ enrichment inhibits shoot nitrate assimilation in C₃ but not C₄ plants and slows growth under nitrate in C₃ plants. *Ecology* 93: 355–367.
- Bloom AJ, Burger M, Kimball BA, Pinter PJ Jr. 2014. Nitrate assimilation is inhibited by elevated CO₂ in field-grown wheat. *Nature Climate Change* 4: 477–480.
- Bloom AJ, Burger M, Rubio Asensio JS, Cousins AB. 2010. Carbon dioxide enrichment inhibits nitrate assimilation in wheat and *Arabidopsis*. *Science* 328: 899–903.
- Bracher A, Whitney SM, Hartl FU, Hayer-Hartl M. 2017. Biogenesis and metabolic maintenance of Rubisco. *Annual Review of Plant Biology* 68: 29–60.
- Busch FA, Sage RF. 2017. The sensitivity of photosynthesis to O₂ and CO₂ concentration identifies strong Rubisco control above the thermal optimum. *New Phytologist* 213: 1036–1051.
- Busch FA, Sage RF, Farquhar GD. 2018. Plants increase CO₂ uptake by assimilating nitrogen via the photorespiratory pathway. *Nature Plants* 4: 46–54.
- Campbell WJ, Ogren WL. 1990. Glyoxylate inhibition of ribulosebiphosphate carboxylase/oxygenase activation in intact, lysed, and reconstituted chloroplasts. *Photosynthesis Research* 23: 257–268.
- Carlisle E, Myers S, Raboy V, Bloom A. 2012. The effects of inorganic nitrogen form and CO₂ concentration on wheat yield and nutrient accumulation and distribution. *Frontiers in Plant Science* 3: 195.
- Carmo-Silva E, Scales JC, Madgwick PJ, Parry MAJ. 2015. Optimizing Rubisco and its regulation for greater resource use efficiency. *Plant, Cell & Environment* 38: 1817–1832.
- Cavaleri MA, Coble AP, Ryan MG, Bauerle WL, Loescher HW, Oberbauer SF. 2017. Tropical rainforest carbon sink declines during El Niño as a result of reduced photosynthesis and increased respiration rates. *New Phytologist* 216: 136–149.
- Cen Y-P, Sage RF. 2005. The regulation of rubisco activity in response to variation in temperature and atmospheric CO₂ partial pressure in sweet potato. *Plant Physiology* 139: 979–990.
- Chahine MT, Chen L, Dimotakis P, Jiang X, Li Q, Olsen ET, Pagano T, Randerson J, Yung YL. 2008. Satellite remote sounding of mid-tropospheric CO₂. *Geophysical Research Letters* 35: L17807.
- Cheng L, Booker FL, Tu C, Burkey KO, Zhou L, Shew HD, Rufty TW, Hu S. 2012. Arbuscular mycorrhizal fungi increase organic carbon decomposition under elevated CO₂. *Science* 337: 1084–1087.
- Ciais P, Sabine C, Bala G, Bopp L, Brovkin V, Canadell J, Chhabra A, DeFries R, Galloaway J, Heimann M *et al.* 2013. Carbon and other biogeochemical cycles. In: Tignor M, Allen SK, Boschung J, Nauels A, Xia Y, Bex V, Midgley PM, eds. *Climate Change 2013: the Physical Science Basis. Contribution of Working Group I to the Fifth Assessment Report of the Intergovernmental Panel on Climate Change*. Cambridge University Press, Cambridge, UK and New York, NY, USA, 465–570.
- Clark R, Menary R. 1980. Environmental effects on peppermint (*Mentha piperita* L.). II. Effects of temperature on photosynthesis, photorespiration and dark respiration in peppermint with reference to oil composition. *Australian Journal of Plant Physiology* 7: 693.
- Clough JM, Peet MM, Kramer Phytotron PJ. 1981. Effects of high atmospheric CO₂ and sink size on rates of photosynthesis of a soybean cultivar. *Plant Physiology* 67: 1007–1010.
- Cook CM, Mulligan RM, Tolbert NE. 1985. Inhibition and stimulation of ribulose-1,5-bisphosphate carboxylase/oxygenase by glyoxylate. *Archives of Biochemistry and Biophysics* 240: 392–401.
- Cotrufo MF, Ineson P, Scott A. 1998. Elevated CO₂ reduces the nitrogen concentration of plant tissues. *Global Change Biology* 4: 43–54.
- Coumou D, Robinson A. 2013. Historic and future increase in the global land area affected by monthly heat extremes. *Environmental Research Letters* 8: 34018.
- Crafts-Brandner SJ, Salvucci ME. 2000. Rubisco activase constrains the photosynthetic potential of leaves at high temperature and CO₂. *Proceedings of the National Academy of Sciences, USA* 97: 13430–13435.
- Crawford NM, Glass AD. 1998. Molecular and physiological aspects of nitrate uptake in plants. *Trends in Plant Science* 3: 389–395.
- Crous KY, Wallin G, Atkin OK, Uddling J, Ekenstam A. 2017. Acclimation of light and dark respiration to experimental and seasonal warming are mediated by changes in leaf nitrogen in *Eucalyptus globulus*. *Tree Physiology* 37: 1069–1083.
- Crous KY, Zaragoza-Castells J, Elsworth DS, Duursma RA, Low M, Tissue DT, Atkin OK. 2012. Light inhibition of leaf respiration in field-grown *Eucalyptus saligna* in whole-tree chambers under elevated atmospheric CO₂ and summer drought. *Plant, Cell & Environment* 35: 966–981.
- Curtis PS. 1996. A meta-analysis of leaf gas exchange and nitrogen in trees grown under elevated carbon dioxide. *Plant, Cell & Environment* 19: 127–137.
- Curtis PS, Wang X. 1998. A meta-analysis of elevated CO₂ effects on woody plant mass, form, and physiology. *Oecologia* 113: 299–313.
- Dekker SC, Groenendijk M, Booth BBB, Huntingford C, Cox PM. 2016. Spatial and temporal variations in plant water-use efficiency inferred from tree-ring, eddy covariance and atmospheric observations. *Earth System Dynamics* 7: 525–533.
- Dellero Y, Lamothe-Sibold M, Jossier M, Hodges M. 2015. *Arabidopsis thaliana* ggt1 photorespiratory mutants maintain leaf carbon/nitrogen balance by reducing Rubisco content and plant growth. *Plant Journal* 83: 1005–1018.
- Díaz S, Grime JP, Harris J, McPherson E. 1993. Evidence of a feedback mechanism limiting plant response to elevated carbon dioxide. *Nature* 364: 616–617.
- Dieleman WJ, Vicca S, Dijkstra FA, Hagedorn F, Hovenden MJ, Larsen KS, Morgan JA, Volder A, Beier C, Dukes JS *et al.* 2012. Simple additive effects are rare: a quantitative review of plant biomass and soil process responses to combined manipulations of CO₂ and temperature. *Global Change Biology* 18: 2681–2693.
- Drake BG, González-Meler MA, Long SP. 1997. More efficient plants: a consequence of rising atmospheric CO₂? *Annual Review of Plant Physiology and Plant Molecular Biology* 48: 609–639.
- Drake BL, Hanson DT, Lowrey TK, Sharp ZD. 2017. The carbon fertilization effect over a century of anthropogenic CO₂ emissions: higher intracellular CO₂ and more drought resistance among invasive and native grass species contrasts with increased water use efficiency for woody plant. *Global Change Biology* 23: 782–792.
- Duan H, Amthor JS, Duursma RA, O'Grady P, Choat B, Tissue DT. 2013. Carbon dynamics of Eucalypt seedlings exposed to progressive drought in elevated [CO₂] and elevated temperature. *Tree Physiology* 33: 779–792.
- Edwards EJ, Unwin D, Kilmister R, Treeby M. 2017. Multi-seasonal effects of warming and elevated CO₂ on the physiology, growth and production of mature, field grown. *Shiraz Grapevines* 51: 127–132.
- Eisenhut M, Bräutigam A, Timm S, Florian A, Tohge T, Fernie AR, Bauwe H, Weber APM. 2017. Photorespiration is crucial for dynamic response of photosynthetic metabolism and stomatal movement to altered CO₂ availability. *Molecular Plant* 10: 47–61.
- Ellsworth DS, Anderson IC, Crous KY, Cooke J, Drake JE, Gherlenda AN, Gimeno TE, Macdonald CA, Medlyn BE, Powell JR *et al.* 2017. Elevated CO₂

- does not increase eucalypt forest productivity on a low-phosphorus soil. *Nature Climate Change* 7: 279–282.
- Ellsworth DS, Thomas R, Crous KY, Palmroth S, Ward E, Maier C, DeLucia E, Oren R. 2012. Elevated CO₂ affects photosynthetic responses in canopy pine and subcanopy deciduous trees over 10 years: a synthesis from Duke FACE. *Global Change Biology* 18: 223–242.
- Falcone DL, Ogas JP, Somerville CR. 2004. Regulation of membrane fatty acid composition by temperature in mutants of *Arabidopsis* with alterations in membrane lipid composition. *BMC Plant Biology* 4: 17.
- Farquhar GD, von Caemmerer S, Berry JA. 1980. A biochemical model of photosynthetic CO₂ assimilation in leaves of C₃ species. *Planta* 149: 78–90.
- Fatichi S, Leuzinger S, Körner C. 2014. Moving beyond photosynthesis: from carbon source to sink-driven vegetation modeling. *New Phytologist* 201: 1086–1095.
- Fatichi S, Leuzinger S, Paschalis A, Langley JA, Donnellan Barraclough A, Hovenden MJ. 2016. Partitioning direct and indirect effects reveals the response of water-limited ecosystems to elevated CO₂. *Proceedings of the National Academy of Sciences, USA* 113: 12757–12762.
- Fay PA, Jin VL, Way DA, Potter KN, Gill RA, Jackson RB, Wayne Polley H, Polley HW. 2012. Soil-mediated effects of subambient to increased carbon dioxide on grassland productivity. *Nature Climate Change* 2: 742–746.
- Feller U. 2016. Drought stress and carbon assimilation in a warming climate: reversible and irreversible impacts. *Journal of Plant Physiology* 203: 84–94.
- Feng Z, Rütting T, Pleijel H, Wallin G, Reich PB, Kammann CI, Newton PCD, Kobayashi K, Luo Y, Uddling J. 2015. Constraints to nitrogen acquisition of terrestrial plants under elevated CO₂. *Global Change Biology* 21: 3152–3168.
- Ficklin DL, Novick KA. 2017. Historic and projected changes in vapor pressure deficit suggest a continental-scale drying of the United States atmosphere. *Journal of Geophysical Research: Atmospheres* 122: 2061–2079.
- Field CB, Jackson RB, Mooney HA. 1995. Stomatal responses to increased CO₂: implications from the plant to the global scale. *Plant, Cell & Environment* 18: 1214–1225.
- Finzi AC, Norby RJ, Calfapietra C, Gallet-Budynek A, Gielen B, Holmes WE, Hoosbeek MR, Iversen CM, Jackson RB, Kubiske ME *et al.* 2007. Increases in nitrogen uptake rather than nitrogen-use efficiency support higher rates of temperate forest productivity under elevated CO₂. *Proceedings of the National Academy of Sciences, USA* 104: 14014–14019.
- Frank DC, Poulter B, Saurer M, Esper J, Huntingford C, Helle G, Treydte K, Zimmermann NE, Schleser GH, Ahlström A *et al.* 2015. Water-use efficiency and transpiration across European forests during the Anthropocene. *Nature Climate Change* 5: 579–583.
- Franks PJ, Farquhar GD. 1999. A relationship between humidity response, growth form and photosynthetic operating point in C₃ plants. *Plant, Cell & Environment* 22: 1337–1349.
- Garbutt K, Bazzaz FA. 1984. The effects of elevated CO₂ on plants III. Flower, fruit and seed production and abortion. *New Phytologist* 98: 433–446.
- Gauthier PPG, Crous KY, Ayub G, Duan H, Weerasinghe LK, Ellsworth DS, Tjoelker MG, Evans JR, Tissue DT, Atkin OK. 2014. Drought increases heat tolerance of leaf respiration in *Eucalyptus globulus* saplings grown under both ambient and elevated atmospheric [CO₂] and temperature. *Journal of Experimental Botany* 65: 6471–6485.
- Gerhart LM, Ward JK. 2010. Plant responses to low [CO₂] of the past. *New Phytologist* 188: 674–695.
- Ghannoum O, Phillips NG, Sears MA, Logan BA, Lewis JD, Conroy JP, Tissue DT. 2010. Photosynthetic responses of two eucalypts to industrial-age changes in atmospheric [CO₂] and temperature. *Plant, Cell & Environment* 33: 1671–1681.
- Gifford RM. 1995. Whole plant respiration and photosynthesis of wheat under increased CO₂ concentration and temperature: long-term *vs.* short-term distinctions for modelling. *Global Change Biology* 1: 385–396.
- Gifford RM, Lambers H, Morison JIL. 1985. Respiration of crop species under CO₂ enrichment. *Physiologia Plantarum* 63: 351–356.
- Gray SB, Dermody O, Klein SP, Locke AM, McGrath JM, Paul RE, Rosenthal DM, Ruiz-Vera UM, Siebers MH, Strellner R *et al.* 2016. Intensifying drought eliminates the expected benefits of elevated carbon dioxide for soybean. *Nature Plants* 2: 16132.
- Griffin KL, Anderson OR, Gastrich MD, Lewis JD, Lin G, Schuster W, Seemann JR, Tissue DT, Turnbull MH, Whitehead D. 2001. Plant growth in elevated CO₂ alters mitochondrial number and chloroplast fine structure. *Proceedings of the National Academy of Sciences, USA* 98: 2473–2478.
- Gunderson CA, Sholtis JD, Wullschlegel SD, Tissue DT, Hanson PJ, Norby RJ. 2002. Environmental and stomatal control of photosynthetic enhancement in the canopy of a sweetgum (*Liquidambar styraciflua* L.) plantation during 3 years of CO₂ enrichment. *Plant, Cell & Environment* 25: 379–393.
- Hansen J, Ruedy R, Sato M, Lo K. 2010. Global surface temperature change. *Reviews of Geophysics* 48: RG4004.
- Havaux M. 1992. Stress tolerance of photosystem II *in vivo*: antagonistic effects of water, heat, and photoinhibition stresses. *Plant Physiology* 100: 424–432.
- Havaux M. 1993. Rapid photosynthetic adaptation to heat stress triggered in potato leaves by moderately elevated temperatures. *Plant, Cell & Environment* 16: 461–467.
- Hawkesford M, Kichey T, Lambers H, Schjoerring J, Skrumager MI, White P. 2012. Functions of macronutrients. In: Marchner P, ed. *Marchner's mineral nutrition of higher plants*. Amsterdam, the Netherlands: Elsevier, 135–189.
- Haworth M, Moser G, Raschi A, Kammann C, Grünhage L, Müller C. 2015. Carbon dioxide fertilisation and suppressed respiration induce enhanced spring biomass production in a mixed species temperate meadow exposed to moderate carbon dioxide enrichment. *Functional Plant Biology* 43: 26–39.
- Herrick JD, Thomas RB. 2001. No photosynthetic down-regulation in sweetgum trees (*Liquidambar styraciflua* L.) after three years of CO₂ enrichment at the Duke Forest FACE experiment. *Plant, Cell & Environment* 24: 53–64.
- Heskel MA, Greaves HE, Turnbull MH, O'Sullivan OS, Shaver GR, Griffin KL, Atkin OK. 2014. Thermal acclimation of shoot respiration in an Arctic woody plant species subjected to 22 years of warming and altered nutrient supply. *Global Change Biology* 20: 2618–2630.
- Heskel MA, O'Sullivan OS, Reich PB, Tjoelker MG, Weerasinghe LK, Penillard A, Egerton JGG, Creek D, Bloomfield KJ, Xiang J *et al.* 2016. Convergence in the temperature response of leaf respiration across biomes and plant functional types. *Proceedings of the National Academy of Sciences, USA* 113: 3832–3837.
- Hickler T, Smith B, Prentice IC, Mjofors K, Miller P, Arneth A, Sykes MT. 2008. CO₂ fertilization in temperate FACE experiments not representative of boreal and tropical forests. *Global Change Biology* 14: 1531–1542.
- Hofstra G, Hesketh JD. 1969. Effects of temperature on the gas exchange of leaves in the light and dark. *Planta* 85: 228–237.
- Itzhak Kurek O, Kai Chang T, Bertain SM, Madrigal A, Liu L, Lassner MW, Zhu G. 2007. Enhanced thermostability of *Arabidopsis* Rubisco activase improves photosynthesis and growth rates under moderate heat stress. *Plant Cell* 19: 3230–3241.
- Jablonski LM, Wang X, Curtis PS. 2002. Plant reproduction under elevated CO₂ conditions: a meta-analysis of reports on 79 crop and wild species. *New Phytologist* 156: 9–26.
- Jin Z, Ainsworth EA, Leakey ADB, Lobell DB. 2018. Increasing drought and diminishing benefits of elevated carbon dioxide for soybean yields across the US Midwest. *Global Change Biology* 24: e522–e533.
- Jordan DB, Ogren WL. 1984. The CO₂/O₂ specificity of ribulose 1,5-bisphosphate carboxylase/oxygenase. *Planta* 161: 308–313.
- Kebeish R, Niessen M, Thiruvveedhi K, Bari R, Hirsch H-J, Rosenkranz R, Stäbler N, Schönfeld B, Kreuzaler F, Peterhansel C. 2007. Chloroplastic photorespiratory bypass increases photosynthesis and biomass production in *Arabidopsis thaliana*. *Nature Biotechnology* 25: 593–599.
- Keenan TF, Hollinger DY, Bohrer G, Dragoni D, Munger JW, Schmid HP, Richardson AD. 2013. Increase in forest water-use efficiency as atmospheric carbon dioxide concentrations rise. *Nature* 499: 324–327.
- Killi D, Bussotti F, Raschi A, Haworth M. 2017. Adaptation to high temperature mitigates the impact of water deficit during combined heat and drought stress in C₃ sunflower and C₄ maize varieties with contrasting drought tolerance. *Physiologia Plantarum* 159: 130–147.
- Kimball BA, Bernacchi CJ. 2006. Evapotranspiration, canopy temperature, and plant water relations. In: Blum H, Stitt M, Hendrey GR, eds. *Managed ecosystems and CO₂*. Berlin, Germany: Springer-Verlag, 311–324.
- Knauber J, Zaehle S, Reichstein M, Medlyn BE, Forkel M, Hagemann S, Werner C. 2017. The response of ecosystem water-use efficiency to rising atmospheric CO₂ concentrations: sensitivity and large-scale biogeochemical implications. *New Phytologist* 213: 1654–1666.

- Körner C. 2015. Paradigm shift in plant growth control. *Current Opinion in Plant Biology* 25: 107–114.
- Kromdijk J, Glowacka K, Leonelli L, Gabilly ST, Iwai M, Niyogi KK, Long SP. 2016. Improving photosynthesis and crop productivity by accelerating recovery from photoprotection. *Science* 354: 857–861.
- Kroner Y, Way DA. 2016. Carbon fluxes acclimate more strongly to elevated growth temperatures than to elevated CO₂ concentrations in a northern conifer. *Global Change Biology* 22: 2913–2928.
- Ku SB, Edwards GE. 1977a. Oxygen inhibition of photosynthesis: I. Temperature dependence and relation to O₂/CO₂ solubility ratio. *Plant Physiology* 59: 986–990.
- Ku SB, Edwards GE. 1977b. Oxygen inhibition of photosynthesis: II. Kinetic characteristics as affected by temperature. *Plant Physiology* 59: 991–999.
- Kumar A, Li C, Portis AR. 2009. *Arabidopsis thaliana* expressing a thermostable chimeric Rubisco activase exhibits enhanced growth and higher rates of photosynthesis at moderately high temperatures. *Photosynthesis Research* 100: 143–153.
- Kurepin LV, Stangl ZR, Ivanov AG, Bui V, Mema M, Hüner NPA, Öquist G, Way D, Hurry V. 2018. Contrasting acclimation abilities of two dominant boreal conifers to elevated CO₂ and temperature. *Plant, Cell & Environment* 41: 1331–1345.
- Lamba S, Hall M, Rantfors M, Chaudhary N, Linder S, Way D, Uddling J, Wallin G. 2018. Physiological acclimation dampens initial effects of elevated temperature and atmospheric CO₂ concentration in mature boreal Norway spruce. *Plant, Cell & Environment* 41: 300–313.
- Lammertsma EI, Jan De Boer H, Dekker SC, Dilcher DL, Lotter AF, Wagner-Cremer F. 2011. Global CO₂ rise leads to reduced maximum stomatal conductance in Florida vegetation. *Proceedings of the National Academy of Sciences, USA* 108: 4035–4040.
- Lawson T, Davey PA, Yates SA, Bechtold U, Baeshen M, Baeshen N, Mutwakil MZ, Sabir J, Baker NR, Mullineaux PM. 2014. C₃ photosynthesis in the desert plant *Rhazya stricta* is fully functional at high temperatures and light intensities. *New Phytologist* 201: 862–873.
- Le Quéré C, Andrew RM, Canadell JG, Sitch S, Korsbakken JI, Peters GP, Manning AC, Boden TA, Tans PP, Houghton RA *et al.* 2016. Global carbon budget 2016. *Earth System Science Data* 8: 605–649.
- Leakey ADB, Ainsworth EA, Bernacchi CJ, Rogers A, Long SP, Ort DR. 2009. Elevated CO₂ effects on plant carbon, nitrogen, and water relations: six important lessons from FACE. *Journal of Experimental Botany* 60: 2859–2876.
- Leuzinger S, Luo Y, Beier C, Dieleman W, Vicca S, Körner C. 2011. Do global change experiments overestimate impacts on terrestrial ecosystems? *Trends in Ecology & Evolution* 26: 236–241.
- Lewis JD, Lucash M, Olszyk D, Tingey DT. 2001. Seasonal patterns of photosynthesis in Douglas fir seedlings during the third and fourth year of exposure to elevated CO₂ and temperature. *Plant, Cell & Environment* 24: 539–548.
- Lewis JD, Lucash M, Olszyk DM, Tingey DT. 2004. Relationships between needle nitrogen concentration and photosynthetic responses of Douglas-fir seedlings to elevated CO₂ and temperature. *New Phytologist* 162: 355–364.
- Lewis JD, Phillips NG, Logan BA, Smith RA, Aranjuelo I, Clarke S, Offord CA, Frith A, Barbour M, Huxman T *et al.* 2015. Rising temperature may negate the stimulatory effect of rising CO₂ on growth and physiology of Wollemi pine (*Wollemia nobilis*). *Functional Plant Biology* 42: 836.
- Li X, Zhang G, Sun B, Zhang S, Zhang Y, Liao Y, Zhou Y, Xia X, Shi K, Yu J. 2013. Stimulated leaf dark respiration in tomato in an elevated carbon dioxide atmosphere. *Scientific Reports* 3: 3433.
- Linkosalo T, El-Khoury H, Mäkipää R, Pulkkinen P, Juurola E. 2017. Increased atmospheric CO₂ concentration enhances the development of photosynthetic capacity beyond the temperature effect for silver birch in simulated future climate. *Scandinavian Journal of Forest Research* 32: 651–657.
- Long SP. 1991. Modification of the response of photosynthetic productivity to rising temperature by atmospheric CO₂ concentrations: has its importance been underestimated? *Plant, Cell & Environment* 14: 729–739.
- Long SP, Ainsworth EA, Leakey ADB, Nösberger J, Ort DR. 2006. Food for thought: lower-than-expected crop yield stimulation with rising CO₂ concentrations. *Science* 312: 1918–1921.
- Long SP, Ainsworth EA, Rogers A, Ort DR. 2004. Rising atmospheric carbon dioxide: plants FACE the future. *Annual Review of Plant Biology* 55: 591–628.
- Long SP, Bernacchi CJ. 2003. Gas exchange measurements, what can they tell us about the underlying limitations to photosynthesis? Procedures and sources of error. *Journal of Experimental Botany* 54: 2393–2401.
- Loreto F, Velikova V, Di Marco G. 2001. Respiration in the light measured by ¹²CO₂ emission in ¹³CO₂ atmosphere in maize leaves. *Functional Plant Biology* 28: 1103–1108.
- Loveys BR, Atkinson LJ, Sherlock DJ, Roberts RL, Fitter AH, Atkin OK. 2003. Thermal acclimation of leaf and root respiration: an investigation comparing inherently fast- and slow-growing plant species. *Global Change Biology* 9: 895–910.
- Luo Y, Hui D, Zhang D. 2006. Elevated CO₂ stimulates net accumulations of carbon and nitrogen in land ecosystems: a meta-analysis. *Ecology* 87: 53–63.
- Luo Y, Su B, Currie WS, Dukes JS, Finzi A, Hartwig U, Hungate B, McMurtrie RE, Oren R, Parton WJ *et al.* 2004. Progressive nitrogen limitation of ecosystem responses to rising atmospheric carbon dioxide. *BioScience* 54: 731–739.
- Markelz RJC, Lai LX, Vosseler LN, Leakey ADB. 2014. Transcriptional reprogramming and stimulation of leaf respiration by elevated CO₂ concentration is diminished, but not eliminated, under limiting nitrogen supply. *Plant, Cell & Environment* 37: 886–898.
- Mastrotheodoros T, Pappas C, Molnar P, Burlando P, Keenan TF, Gentile P, Gough CM, Faticchi S. 2017. Linking plant functional trait plasticity and the large increase in forest water use efficiency. *Journal of Geophysical Research: Biogeosciences* 122: 2393–2408.
- Maurino VG, Peterhansel C. 2010. Photorespiration: current status and approaches for metabolic engineering. *Current Opinion in Plant Biology* 13: 248–255.
- McCarthy HR, Oren R, Johnsen KH, Gallet-Budynek A, Pritchard SG, Cook CW, LaDeau SL, Jackson RB, Finzi AC. 2010. Re-assessment of plant carbon dynamics at the Duke free-air CO₂ enrichment site: interactions of atmospheric [CO₂] with nitrogen and water availability over stand development. *New Phytologist* 185: 514–528.
- McConnaughay KDM, Berntson GM, Bazzaz FA. 1993. Limitations to CO₂-induced growth enhancement in pot studies. *Oecologia* 94: 550–557.
- Medlyn BE, Barton CVM, Broadmeadow MSJ, Ceulemans R, De Angelis P, Forstreuter M, Freeman M, Jackson SB, Kellomaki S, Laita E *et al.* 2001. Stomatal conductance of forest species after long-term exposure to elevated CO₂ concentration: a synthesis. *New Phytologist* 149: 247–264.
- Moore BD, Cheng S-H, Sims D, Seemann JR. 1999. The biochemical and molecular basis for photosynthetic acclimation to elevated atmospheric CO₂. *Plant, Cell & Environment* 22: 567–582.
- Niu S, Luo Y, Fei S, Yuan W, Schimel D, Law BE, Ammann C, Altaf Arain M, Arneeth A, Aubinet M *et al.* 2012. Thermal optimality of net ecosystem exchange of carbon dioxide and underlying mechanisms. *New Phytologist* 194: 775–783.
- Norby RJ, Luo Y. 2004. Evaluating ecosystem responses to rising atmospheric CO₂ and global warming in a multi-factor world. *New Phytologist* 162: 281–293.
- Norby RJ, Warren JM, Iversen CM, Medlyn BE, McMurtrie RE. 2010. CO₂ enhancement of forest productivity constrained by limited nitrogen availability. *Proceedings of the National Academy of Sciences, USA* 107: 19368–19373.
- Norby RJ, Zak DR. 2011. Ecological lessons from Free-Air CO₂ Enrichment (FACE) experiments. *Annual Review of Ecology, Evolution, and Systematics* 42: 181–203.
- Obermeier WA, Lehnert LW, Kammann CI, Müller C, Grünhage L, Luterbacher J, Erbs M, Moser G, Seibert R, Yuan N *et al.* 2017. Reduced CO₂ fertilization effect in temperate C₃ grasslands under more extreme weather conditions. *Nature Climate Change* 7: 137–141.
- Oren R, Ellsworth DS, Johnsen KH, Phillips N, Ewers BE, Maier C, Schäfer KVR, McCarthy H, Hendrey G, McNulty SG *et al.* 2001. Soil fertility limits carbon sequestration by forest ecosystems in a CO₂-enriched atmosphere. *Nature* 411: 469–472.
- Oren R, Sperry JS, Katul GG, Pataki DE, Ewers BE, Phillips N, Schäfer KVR. 1999. Survey and synthesis of intra- and interspecific variation in stomatal sensitivity to vapour pressure deficit. *Plant, Cell & Environment* 22: 1515–1526.
- Pathare VS, Crous KY, Cooke J, Creek D, Ghannoum O, Ellsworth DS. 2017. Water availability affects seasonal CO₂-induced photosynthetic enhancement in herbaceous species in a periodically dry woodland. *Global Change Biology* 23: 5164–5178.

- Pausch J, Kuzyakov Y. 2018. Carbon input by roots into the soil: quantification of rhizodeposition from root to ecosystem scale. *Global Change Biology* 24: 1–12.
- Pearcy RW. 1978. Effect of growth temperature on the fatty acid composition of the leaf lipids in *Atriplex lentiformis* (torr.) wats. *Plant Physiology* 61: 484–486.
- Penuelas J, Matamala R. 1990. Changes in N and S leaf content, stomatal density and specific leaf area of 14 plant species during the last three centuries of CO₂ increase. *Journal of Experimental Botany* 41: 1119–1124.
- Polley HW, Johnson HB, Marino BD, Mayeux HS. 1993. Increase in C₃ plant water-use efficiency and biomass over glacial to present CO₂ concentrations. *Nature* 361: 61–64.
- Poorter H, Fiorani F, Pieruschka R, Wojciechowski T, van der Putten WH, Kleyer M, Schurr U, Postma J. 2016. Pampered inside, pestered outside? Differences and similarities between plants growing in controlled conditions and in the field. *New Phytologist* 212: 838–855.
- Poulter B, Ciais P, Hodson E, Lischke H, Maignan F, Plummer S, Zimmermann NE. 2011. Plant functional type mapping for Earth system models. *Geoscientific Model Development* 4: 993–1010.
- Quint M, Delker C, Franklin KA, Wigge PA, Halliday KJ, van Zanten M. 2016. Molecular and genetic control of plant thermomorphogenesis. *Nature Plants* 2: 15190.
- R Core Team. 2013. *R: a language and environment for statistical computing*. Vienna: R Foundation for Statistical Computing.
- Rachmilevitch S, Cousins AB, Bloom AJ. 2004. Nitrate assimilation in plant shoots depends on photorespiration. *Proceedings of the National Academy of Sciences, USA* 101: 11506–11510.
- Reich PB, Hobbie SE, Lee TD. 2014. Plant growth enhancement by elevated CO₂ eliminated by joint water and nitrogen limitation. *Nature Geoscience* 7: 920–924.
- Reich PB, Hobbie SE, Lee T, Ellsworth DS, West JB, Tilman D, Knops JMH, Naeem S, Trost J. 2006. Nitrogen limitation constrains sustainability of ecosystem response to CO₂. *Nature* 440: 922–925.
- Reich PB, Sendall KM, Stefanski A, Wei X, Rich RL, Montgomery RA. 2016. Boreal and temperate trees show strong acclimation of respiration to warming. *Nature* 531: 633–636.
- Reich PB, Walters MB, Tjoelker MG, Vanderklein D, Buschena C. 1998. Photosynthesis and respiration rates depend on leaf and root morphology and nitrogen concentration in nine boreal tree species differing in relative growth rate. *Functional Ecology* 12: 395–405.
- Robredo A, Pérez-López U, de la Maza HS, González-Moro B, Lacuesta M, Mena-Petite A, Muñoz-Rueda A. 2007. Elevated CO₂ alleviates the impact of drought on barley improving water status by lowering stomatal conductance and delaying its effects on photosynthesis. *Environmental and Experimental Botany* 59: 252–263.
- Roden JS, Ball MC. 1996. The effect of elevated [CO₂] on growth and photosynthesis of two *Eucalyptus* species exposed to high temperatures and water deficits. *Plant Physiology* 111: 909–919.
- Rodrigues WP, Martins MQ, Fortunato AS, Rodrigues AP, Semedo JN, Simões-Costa MC, Pais IP, Leitão AE, Colwell F, Goulao L *et al.* 2016. Long-term elevated air [CO₂] strengthens photosynthetic functioning and mitigates the impact of supra-optimal temperatures in tropical *Coffea arabica* and *C. canephora* species. *Global Change Biology* 22: 415–431.
- Rogers A, Allen DJ, Davey PA, Morgan PB, Ainsworth EA, Bernacchi CJ, Cornig G, Dermody O, Dohleman FG, Heaton EA *et al.* 2004. Leaf photosynthesis and carbohydrate dynamics of soybeans grown throughout their life-cycle under free-air carbon dioxide enrichment. *Plant, Cell & Environment* 27: 449–458.
- Rubio-Asensio JS, Bloom AJ. 2016. Inorganic nitrogen form: a major player in wheat and *Arabidopsis* responses to elevated CO₂. *Journal of Experimental Botany* 68: 2611–2625.
- Ruiz-Vera UM, Siebers M, Gray SB, Drag DW, Rosenthal DM, Kimball BA, Ort DR, Bernacchi CJ. 2013. Global warming can negate the expected CO₂ stimulation in photosynthesis and productivity for soybean grown in the Midwestern United States. *Plant Physiology* 162: 410–423.
- Rütting T, Andresen LC. 2015. Nitrogen cycle responses to elevated CO₂ depend on ecosystem nutrient status. *Nutrient Cycling in Agroecosystems* 101: 285–294.
- Sage RF, Kubien DS. 2007. The temperature response of C₃ and C₄ photosynthesis. *Plant, Cell & Environment* 30: 1086–1106.
- Sage RF, Sharkey TD, Seemann JR. 1989. Acclimation of photosynthesis to elevated CO₂ in five C₃ species. *Plant Physiology* 89: 590–596.
- Salvucci ME, Crafts-Brandner SJ, Salvucci ME. 2004. Relationship between the heat tolerance of photosynthesis and the thermal stability of rubisco activase in plants from contrasting thermal environments. *Plant Physiology* 134: 1460–1470.
- Schrader SM, Wise RR, Wacholtz WF, Ort DR, Sharkey TD. 2004. Thylakoid membrane responses to moderately high leaf temperature in Pima cotton. *Plant, Cell & Environment* 27: 725–735.
- Shapiro JB, Griffin KL, Lewis JD, Tissue DT. 2004. Response of *Xanthium strumarium* leaf respiration in the light to elevated CO₂ concentration, nitrogen availability and temperature. *New Phytologist* 162: 377–386.
- Sharkey TD. 1988. Estimating the rate of photorespiration in leaves. *Physiologia Plantarum* 73: 147–152.
- Sharkey TD, Bernacchi CJ, Farquhar GD, Singsaas EL. 2007. Fitting photosynthetic carbon dioxide response curves for C₃ leaves. *Plant, Cell & Environment* 30: 1035–1040.
- Sharkey TD, Stitt M, Heineke D, Gerhardt R, Raschke K, Heldt HW. 1986. Limitation of photosynthesis by carbon metabolism: II. O₂-insensitive CO₂ uptake results from limitation of triose phosphate utilization. *Plant Physiology* 81: 1123–1129.
- Sharp RE, Matthews MA, Boyer JS. 1984. Kok effect and the quantum yield of photosynthesis: light partially inhibits dark respiration. *Plant Physiology* 75: 95–101.
- Sharwood RE, Ghannoum O, Kapralov MV, Gunn LH, Whitney SM. 2016. Temperature responses of Rubisco from *Panicum* grasses provide opportunities for improving C₃ photosynthesis. *Nature Plants* 2: 16186.
- Slot M, Kitajima K. 2015. General patterns of acclimation of leaf respiration to elevated temperatures across biomes and plant types. *Oecologia* 177: 885–900.
- Smith NG, Dukes JS. 2013. Plant respiration and photosynthesis in global-scale models: incorporating acclimation to temperature and CO₂. *Global Change Biology* 19: 45–63.
- Smith NG, Dukes JS. 2017. Short-term acclimation to warmer temperatures accelerates leaf carbon exchange processes across plant types. *Global Change Biology* 23: 4840–4853.
- Smith SD, Charlet TN, Zitzer SF, Abella SR, Vanier CH, Huxman TE. 2014. Long-term response of a Mojave Desert winter annual plant community to a whole-ecosystem atmospheric CO₂ manipulation (FACE). *Global Change Biology* 20: 879–892.
- Spreitzer RJ, Salvucci ME. 2002. Rubisco: structure, regulatory interactions, and possibilities for a better enzyme. *Annual Review Plant Biology* 53: 449–475.
- Swann ALS, Hoffman FM, Koven CD, Randerson JT. 2016. Plant responses to increasing CO₂ reduce estimates of climate impacts on drought severity. *Proceedings of the National Academy of Sciences, USA* 113: 10019–10024.
- Taiz L, Zeiger E, Møller IM, Murphy A. 2014. *Plant physiology and development*. Sunderland, MA, USA: Sinauer Associates.
- Takahashi S, Badger MR. 2011. Photoprotection in plants: a new light on photosystem II damage. *Trends in Plant Science* 16: 53–60.
- Takatani N, Ito T, Kiba T, Mori M, Miyamoto T, Maeda S, Omata T. 2014. Effects of high CO₂ on growth and metabolism of *Arabidopsis* seedlings during growth with a constantly limited supply of nitrogen. *Plant and Cell Physiology* 55: 281–292.
- Taub DR, Seemann JR, Coleman JS. 2000. Growth in elevated CO₂ protects photosynthesis against high-temperature damage. *Plant, Cell & Environment* 23: 649–656.
- Tcherkez G, Gauthier P, Buckley TN, Busch FA, Barbour MM, Bruhn D, Heskel MA, Gong XY, Crous KY, Griffin K *et al.* 2017. Leaf day respiration: low CO₂ flux but high significance for metabolism and carbon balance. *New Phytologist* 216: 986–1001.
- Terrer C, Vicca S, Hungate BA, Phillips RP, Prentice IC. 2016. Mycorrhizal association as a primary control of the CO₂ fertilization effect. *Science* 353: 72–74.

- Teskey RO. 1997. Combined effects of elevated CO₂ and air temperature on carbon assimilation of *Pinus taeda* trees. *Plant, Cell & Environment* 20: 373–380.
- Thomas RB, Reid CD, Ybema R, Strain BR. 1993. Growth and maintenance components of leaf respiration of cotton grown in elevated carbon dioxide partial pressure. *Plant, Cell & Environment* 16: 539–546.
- Timm S, Bauwe H. 2013. The variety of photorespiratory phenotypes - employing the current status for future research directions on photorespiration. *Plant Biology* 15: 737–747.
- Tingey DT, Lee EH, Phillips DL, Rygielwicz PT, Waschmann RS, Johnson MG, Olszyk DM. 2007. Elevated CO₂ and temperature alter net ecosystem C exchange in a young Douglas fir mesocosm experiment. *Plant, Cell & Environment* 30: 1400–1410.
- Tjoelker MG, Oleksyn J, Lorenc-Plucinska G, Reich PB. 2009. Acclimation of respiratory temperature responses in northern and southern populations of *Pinus banksiana*. *New Phytologist* 181: 218–229.
- Tjoelker MG, Oleksyn J, Reich PB. 1999a. Acclimation of respiration to temperature and CO₂ in seedlings of boreal tree species in relation to plant size and relative growth rate. *Global Change Biology* 5: 679–691.
- Tjoelker MG, Oleksyn J, Reich PB. 2001. Modelling respiration of vegetation: evidence for a general temperature-dependent Q₁₀. *Global Change Biology* 7: 223–230.
- Tjoelker MG, Reich PB, Oleksyn J. 1999b. Changes in leaf nitrogen and carbohydrates underlie temperature and CO₂ acclimation of dark respiration in five boreal tree species. *Plant, Cell & Environment* 22: 767–778.
- Tor-ngern P, Oren R, Ward EJ, Palmroth S, McCarthy HR, Domec J-C. 2015. Increases in atmospheric CO₂ have little influence on transpiration of a temperate forest canopy. *New Phytologist* 205: 518–525.
- Uddling J, Teclaw RM, Pregitzer KS, Ellsworth DS. 2009. Leaf and canopy conductance in aspen and aspen-birch forests under free-air enrichment of carbon dioxide and ozone. *Tree Physiology* 29: 1367–1380.
- Ukkola AM, Prentice IC, Keenan TF, van Dijk AIJM, Viney NR, Myneni RB, Bi J. 2016. Reduced streamflow in water-stressed climates consistent with CO₂ effects on vegetation. *Nature Climate Change* 6: 75–78.
- Volk M, Niklaus PA, Körner C. 2000. Soil moisture effects determine CO₂ responses of grassland species. *Oecologia* 125: 380–388.
- Voss I, Sunil B, Scheibe R, Raghavendra AS. 2013. Emerging concept for the role of photorespiration as an important part of abiotic stress response. *Plant Biology* 15: 713–722.
- Walker BJ, VanLoocke A, Bernacchi CJ, Ort DR. 2016. The costs of photorespiration to food production now and in the future. *Annual Review of Plant Biology* 67: 107–129.
- Wang D, Heckathorn SA, Barua D, Joshi P, Hamilton EW, LaCroix JJ. 2008. Effects of elevated CO₂ on the tolerance of photosynthesis to acute heat stress in C₃, C₄, and CAM species. *American Journal of Botany* 95: 165–176.
- Wang D, Heckathorn SA, Wang X, Philpott SM. 2012. A meta-analysis of plant physiological and growth responses to temperature and elevated CO₂. *Oecologia* 169: 1–13.
- Wang K, Kellomaki S, Laitinen K. 1995. Effects of needle age, long-term temperature and CO₂ treatments on the photosynthesis of Scots pine. *Tree Physiology* 15: 211–218.
- Wang X, Anderson OR, Griffin KL. 2004. Chloroplast numbers, mitochondrion numbers and carbon assimilation physiology of *Nicotiana sylvestris* as affected by CO₂ concentration. *Environmental and Experimental Botany* 51: 21–31.
- Wang X, Lewis JD, Tissue DT, Seemann JR, Griffin KL. 2001. Effects of elevated atmospheric CO₂ concentration on leaf dark respiration of *Xanthium strumarium* in light and in darkness. *Proceedings of the National Academy of Sciences, USA* 98: 2479–2484.
- Warren JM, Jensen AM, Medlyn BE, Norby RJ, Tissue DT. 2015. Carbon dioxide stimulation of photosynthesis in *Liquidambar styraciflua* is not sustained during a 12-year field experiment. *AoB PLANTS* 7: plu074.
- Warren JM, Norby RJ, Wullschlegel SD. 2011. Elevated CO₂ enhances leaf senescence during extreme drought in a temperate forest. *Tree Physiology* 31: 117–130.
- Way DA, Oren R. 2010. Differential responses to increased growth temperatures between trees from different functional groups and biomes: a review and synthesis of data. *Tree Physiology* 30: 669–688.
- Way DA, Oren R, Kroner Y. 2015. The space-time continuum: the effects of elevated CO₂ and temperature on trees and the importance of scaling. *Plant, Cell & Environment* 38: 991–1007.
- Way DA, Sage RF. 2008. Elevated growth temperatures reduce the carbon gain of black spruce [*Picea mariana* (Mill.) B.S.P.]. *Global Change Biology* 14: 624–636.
- Way DA, Yamori W. 2014. Thermal acclimation of photosynthesis: on the importance of adjusting our definitions and accounting for thermal acclimation of respiration. *Photosynthesis Research* 119: 89–100.
- Weerasinghe LK, Creek D, Crous KY, Xiang S, Liddell MJ, Turnbull MH, Atkin OK. 2014. Canopy position affects the relationships between leaf respiration and associated traits in a tropical rainforest in Far North Queensland. *Tree Physiology* 34: 564–584.
- Whitehead D, Griffin KL, Turnbull MH, Tissue DT, Engel VC, Brown KJ, Schuster WSF, Walcroft AS. 2004. Response of total night-time respiration to differences in total daily photosynthesis for leaves in a *Quercus rubra* L. canopy: implications for modelling canopy CO₂ exchange. *Global Change Biology* 10: 925–938.
- Wise RR, Olson AJ, Schrader SM, Sharkey TD. 2004. Electron transport is the functional limitation of photosynthesis in field-grown Pima cotton plants at high temperature. *Plant, Cell & Environment* 27: 717–724.
- Wolf S, Keenan TF, Fisher JB, Baldocchi DD, Desai AR, Richardson AD, Scott RL, Law BE, Litvak ME, Brunsell NA *et al.* 2016. Warm spring reduced carbon cycle impact of the 2012 US summer drought. *Proceedings of the National Academy of Sciences, USA* 113: 5880–5885.
- Woodward FI. 1987. *Climate and plant distribution*. Cambridge, UK: Cambridge University Press.
- Wullschlegel SD, Tschaplinski TJ, Norby RJ. 2002. Plant water relations at elevated CO₂ – implications for water-limited environments. *Plant, Cell & Environment* 25: 319–331.
- Xia J, Chen J, Piao S, Ciais P, Luo Y, Wan S. 2014. Terrestrial carbon cycle affected by non-uniform climate warming. *Nature Geoscience* 7: 173–180.
- Xu Z, Jiang Y, Zhou G. 2015. Response and adaptation of photosynthesis, respiration, and antioxidant systems to elevated CO₂ with environmental stress in plants. *Frontiers in Plant Science* 6: 701.
- Xu Z, Shimizu H, Ito S, Yagasaki Y, Zou C, Zhou G, Zheng Y. 2014. Effects of elevated CO₂, warming and precipitation change on plant growth, photosynthesis and peroxidation in dominant species from North China grassland. *Planta* 239: 421–435.
- Yamori W, Hikosaka K, Way DA. 2014. Temperature response of photosynthesis in C₃, C₄, and CAM plants: temperature acclimation and temperature adaptation. *Photosynthesis Research* 119: 101–117.
- Yamori W, Masumoto C, Fukayama H, Makino A. 2012. Rubisco activase is a key regulator of non-steady-state photosynthesis at any leaf temperature and to a lesser extent, of steady-state photosynthesis at high temperature. *Plant Journal* 71: 871–880.
- Yamori W, Von Caemmerer S. 2009. Effect of Rubisco activase deficiency on the temperature response of CO₂ assimilation rate and Rubisco activation state: insights from transgenic tobacco with reduced amounts of Rubisco activase. *Plant Physiology* 151: 2073–2082.
- Yao Y, Luo Y, Huang J, Zhao Z, Yao Y, Luo Y, Huang J, Zhao Z. 2013. Comparison of monthly temperature extremes simulated by CMIP3 and CMIP5 models. *Journal of Climate* 26: 7692–7707.
- Zelitch I, Schultes NP, Peterson RB, Brown P, Brutnell TP. 2009. High glycolate oxidase activity is required for survival of maize in normal air. *Plant Physiology* 149: 195–204.
- Zha TS, Kellomaki S, Wang K. 2003. Seasonal variation in respiration of 1-year-old shoots of Scots pine exposed to elevated carbon dioxide and temperature for 4 years. *Annals of Botany* 92: 89–96.
- Zhao C, Liu Q. 2009. Growth and photosynthetic responses of two coniferous species to experimental warming and nitrogen fertilization. *Canadian Journal of Forest Research* 39: 1–11.
- Zhu P, Zhuang Q, Ciais P, Welp L, Li W, Xin Q. 2017. Elevated atmospheric CO₂ negatively impacts photosynthesis through radiative forcing and physiology-mediated climate feedback. *Geophysical Research Letters* 44: 1956–1963.

Ziska LH, Bunce JA. 1993. Inhibition of whole plant respiration by elevated CO₂ as modified by growth temperature. *Physiologia Plantarum* 87: 459–466.

Supporting Information

Additional supporting information may be found online in the Supporting Information section at the end of the article:

Fig. S1 The relationship between growth temperature (T_{growth}) and either net CO₂ assimilation rate at T_{growth} (A_{growth}), leaf dark respiration rate at T_{growth} (R_{growth}) or the ratio of A_{growth} to R_{growth} .

Table S1 List of species used in the meta-analysis, including the plant functional type, biome where the species is found and the study from which the data were taken

Please note: Wiley Blackwell are not responsible for the content or functionality of any Supporting Information supplied by the authors. Any queries (other than missing material) should be directed to the *New Phytologist* Central Office.

Appendix A1

References used in the meta-analysis

- Atkin OK, Scheurwater I, Pons TL. 2006. High thermal acclimation potential of both photosynthesis and respiration in two lowland *Plantago* species in contrast to an alpine congeneric. *Global Change Biology* 12: 500–515.
- Ayub G, Smith RA, Tissue DT, Atkin OK. 2011. Impacts of drought on leaf respiration in darkness and light in *Eucalyptus saligna* exposed to industrial-age atmospheric CO₂ and growth temperature. *New Phytologist* 190: 1003–1018.
- Badger MR, Björkman O, Armond PA. 1982. An analysis of photosynthetic response and adaptation to temperature in higher plants: temperature acclimation in the desert evergreen *Nerium oleander* L. *Plant, Cell & Environment* 5: 85–99.
- Bauerle WL, Bowden JD, Wang GG. 2007. The influence of temperature on within-canopy acclimation and variation in leaf photosynthesis: spatial acclimation to microclimate gradients among climatically divergent *Acer rubrum* L. genotypes. *Journal of Experimental Botany* 58: 3285–3298.
- Berry J, Björkman O. 1980. Photosynthetic response and adaptation to temperature in higher plants. *Annual Review of Plant Physiology* 31: 491–543.
- Björkman O, Mooney HA, Ehleringer J. 1975. Photosynthetic responses of plants from habitats with contrasting thermal environments: comparison of photosynthetic characteristics of intact plants. *Carnegie Institution Washington Yearbook* 74: 743–748.
- Cowling SA, Sage RF. 1998. Interactive effects of low atmospheric CO₂ and elevated temperature on growth, photosynthesis and respiration in *Phaseolus vulgaris*. *Plant, Cell & Environment* 21: 427–435.
- Dahal K, Kane K, Gadapati W, Webb E, Savitch LV, Singh J, Sharma P, Sarhan F, Longstaffe FJ, Grodzinski B, Hüner NPA. 2012. The effects of phenotypic plasticity on photosynthetic performance in winter rye, winter wheat and *Brassica napus*. *Physiologia Plantarum* 144: 169–188.
- Drake JE, Aspinwall MJ, Pfautsch S, Rymer PD, Reich PB, Smith RA, Crous KY, Tissue DT, Ghannoum O, Tjoelker MG. 2015. The capacity to cope with climate warming declines from temperate to tropical latitudes in two widely distributed *Eucalyptus* species. *Global Change Biology* 21: 459–472.
- Dwyer SA, Ghannoum O, Nicotra A, von Caemmerer S. 2007. High temperature acclimation of C₄ photosynthesis is linked to changes in photosynthetic biochemistry. *Plant, Cell & Environment* 30: 53–66.
- Ferrar P, Slatyer R, Vranjic J. 1989. Photosynthetic temperature acclimation in *Eucalyptus* species from diverse habitats, and a comparison with *Nerium oleander*. *Australian Journal of Plant Physiology* 16: 199.
- Ghannoum O, Phillips NG, Sears MA, Logan BA, Lewis JD, Conroy JP, Tissue DT. 2010. Photosynthetic responses of two eucalypts to industrial-age changes in atmospheric [CO₂] and temperature. *Plant, Cell & Environment* 33: 1671–1681.
- Gunderson CA, Norby RJ, Wullschlegel SD. 2000. Acclimation of photosynthesis and respiration to simulated climatic warming in northern and southern populations of *Acer saccharum*: laboratory and field evidence. *Tree Physiology* 20: 87–96.
- Gunderson CA, O'Hara KH, Campion CM, Walker AV, Edwards NT. 2009. Thermal plasticity of photosynthesis: the role of acclimation in forest responses to a warming climate. *Global Change Biology* 16: 2272–2286.
- Hill RS, Read J, Busby JR. 1988. The temperature-dependence of photosynthesis of some Australian temperate rainforest trees and its biogeographical significance. *Journal of Biogeography* 15: 431.
- Huang G, Rymer PD, Duan H, Smith RA, Tissue DT. 2015. Elevated temperature is more effective than elevated [CO₂] in exposing genotypic variation in *Telopea speciosissima* growth plasticity: implications for woody plant populations under climate change. *Global Change Biology* 21: 3800–3813.
- Ishikawa K, Onoda Y, Hikosaka K. 2007. Intraspecific variation in temperature dependence of gas exchange characteristics among *Plantago asiatica* ecotypes from different temperature regimes. *New Phytologist* 176: 356–364.
- Jumrani K, Bhatia VS, Pandey GP. 2017. Impact of elevated temperatures on specific leaf weight, stomatal density, photosynthesis and chlorophyll fluorescence in soybean. *Photosynthesis Research* 131: 333–350.
- Kroner Y, Way DA. 2016. Carbon fluxes acclimate more strongly to elevated growth temperatures than to elevated CO₂ concentrations in a northern conifer. *Global Change Biology* 22: 2913–2928.
- Kruse J, Adams MA, Kadinov G, Arab L, Kreuzwieser J, Alfarraj S, Schulze W, Rennenberg H. 2017. Characterization of photosynthetic acclimation in *Phoenix dactylifera* by a modified Arrhenius equation originally developed for leaf respiration. *Trees* 31: 623–644.
- Kubien DS, Sage RF. 2004. Low-temperature photosynthetic performance of a C₄ grass and a co-occurring C₃ grass native to high latitudes. *Plant, Cell & Environment* 27: 907–916.
- Lewis JD, Lucash M, Olszyk DM, Tingey DT. 2004. Relationships between needle nitrogen concentration and photosynthetic responses of Douglas fir seedlings to elevated CO₂ and temperature. *New Phytologist* 162: 355–364.
- Lorenz HP, Wiebe HJ. 1980. Effect of temperature on photosynthesis of lettuce adapted to different light and temperature conditions. *Scientia Horticulturae* 13: 115–123.
- Massacci A, Lannelli MA, Pietrini F, Loreto F. 1995. The effect of growth at low temperature on photosynthetic characteristics and mechanisms of photoprotection of maize leaves. *Journal of Experimental Botany* 46: 119–127.
- Nagai T, Makino A. 2009. Differences between rice and wheat in temperature responses of photosynthesis and plant growth. *Plant and Cell Physiology* 50: 744–755.
- Ngugi MR, Hunt MA, Doley D, Ryan P, Dart PJ. 2003. Photosynthetic light and temperature responses of *Eucalyptus cloeziana* and *Eucalyptus argophloia*. *Australian Journal of Botany* 51: 573.
- Osório ML, Osório J, Vieira AC, Gonçalves S, Romano A. 2011. Influence of enhanced temperature on photosynthesis, photooxidative damage, and antioxidant strategies in *Ceratonia siliqua* L. seedlings subjected to water deficit and rewetting. *Photosynthetica* 49: 3–12.
- Paul MJ, Lawlor DW, Driscoll SP. 1990. The effect of temperature on photosynthesis and carbon fluxes in sunflower and rape. *Journal of Experimental Botany* 41: 547–555.
- Pearcy RW. 1976. Temperature responses of growth and photosynthetic CO₂ exchange rates in coastal and desert races of *Atriplex lentiformis*. *Oecologia* 26: 245–255.
- Pearcy RW, Tumosa N, Williams K. 1981. Relationships between growth, photosynthesis and competitive interactions for a C₃ and C₄ plant. *Oecologia* 48: 371–376.
- Perdomo JA, Conesa MÀ, Medrano H, Ribas-Carbó M, Galmés J. 2015. Effects of long-term individual and combined water and temperature stress on the growth of rice, wheat and maize: relationship with morphological and physiological acclimation. *Physiologia Plantarum* 155: 149–165.

- Pittermann J, Sage RF. 2000. Photosynthetic performance at low temperature of *Bouteloua gracilis* Lag., a high-altitude C₄ grass from the Rocky Mountains, USA. *Plant, Cell & Environment* 23: 811–823.
- Pons TL. 2012. Interaction of temperature and irradiance effects on photosynthetic acclimation in two accessions of *Arabidopsis thaliana*. *Photosynthesis Research* 113: 207–219.
- Rasulov B, Bichele I, Huve K, Vislap V, Niinemets Ü. 2015. Acclimation of isoprene emission and photosynthesis to growth temperature in hybrid aspen: resolving structural and physiological controls. *Plant, Cell & Environment* 38: 751–766.
- Ruiz-Vera UM, Siebers MH, Drag DW, Ort DR, Bernacchi CJ. 2015. Canopy warming caused photosynthetic acclimation and reduced seed yield in maize grown at ambient and elevated [CO₂]. *Global Change Biology* 21: 4237–4249.
- Santrucek J, Sage RF. 1996. Acclimation of stomatal conductance to a CO₂-enriched atmosphere and elevated temperature in *Chenopodium album*. *Functional Plant Biology* 23: 467–478.
- Scafaro AP, Xiang S, Long BM, Bahar NHA, Weerasinghe LK, Creek D, Evans JR, Reich PB, Atkin OK. 2017. Strong thermal acclimation of photosynthesis in tropical and temperate wet-forest tree species: the importance of altered Rubisco content. *Global Change Biology* 23: 2783–2800.
- Shapiro JB, Griffin KL, Lewis JD, Tissue DT. 2004. Response of *Xanthium strumarium* leaf respiration in the light to elevated CO₂ concentration, nitrogen availability and temperature. *New Phytologist* 162: 377–386.
- Sheu B-H, Lin C-K. 1999. Photosynthetic response of seedlings of the sub-tropical tree *Schima superba* with exposure to elevated carbon dioxide and temperature. *Environmental and Experimental Botany* 41: 57–65.
- Silim SN, Ryan N, Kubien DS. 2010. Temperature responses of photosynthesis and respiration in *Populus balsamifera* L.: acclimation versus adaptation. *Photosynthesis Research* 104: 19–30.
- Smith RA, Lewis JD, Ghannoum O, Tissue DT. 2012. Leaf structural responses to pre-industrial, current and elevated atmospheric [CO₂] and temperature affect leaf function in *Eucalyptus sideroxylon*. *Functional Plant Biology* 39: 285.
- Teskey RO, Will RE. 1999. Acclimation of loblolly pine (*Pinus taeda*) seedlings to high temperatures. *Tree Physiology* 19: 519–525.
- Toft NL, Pearcy RW. 1982. Gas exchange characteristics and temperature relations of two desert annuals: A comparison of a winter-active and a summer-active species. *Oecologia* 55: 170–177.
- Veres JS, Williams GJ III. 1984. Time course of photosynthetic temperature acclimation in *Carex eleocharis* Bailey. *Plant, Cell & Environment* 7: 545–547.
- Wardlaw I, Begg J, Bagnall D, Dunstone R. 1983. Jojoba: temperature adaptation as expressed in growth and leaf function. *Australian Journal of Plant Physiology* 10: 299.
- Warren CR. 2008. Does growth temperature affect the temperature responses of photosynthesis and internal conductance to CO₂? A test with *Eucalyptus regnans*. *Tree Physiology* 28: 11–19.
- Way DA, Sage RF. 2008a. Elevated growth temperatures reduce the carbon gain of black spruce *Picea mariana* (Mill.) B.S.P. *Global Change Biology* 14: 624–636.
- Way DA, Sage RF. 2008b. Thermal acclimation of photosynthesis in black spruce [*Picea mariana* (Mill.) B.S.P.]. *Plant, Cell & Environment* 31: 1250–1262.
- Wertin TM, McGuire MA, van Iersel M, Ruter JM, Teskey RO. 2012. Effects of elevated temperature and [CO₂] on photosynthesis, leaf respiration, and biomass accumulation of *Pinus taeda* seedlings at a cool and a warm site within the species' current range. *Canadian Journal of Forest Research* 42: 943–957.
- Williams DG, Black RA. 1993. Phenotypic variation in contrasting temperature environments: growth and photosynthesis in *Pennisetum setaceum* from different altitudes on Hawaii. *Functional Ecology* 7: 623.
- Xiong FS, Mueller EC, Day TA. 2000. Photosynthetic and respiratory acclimation and growth response of Antarctic vascular plants to contrasting temperature regimes. *American Journal of Botany* 87: 700.
- Xu C-Y, Salih A, Ghannoum O, Tissue DT. 2012. Leaf structural characteristics are less important than leaf chemical properties in determining the response of leaf mass per area and photosynthesis of *Eucalyptus saligna* to industrial-age changes in [CO₂] and temperature. *Journal of Experimental Botany* 63: 5829–5841.
- Yamori W, Von Caemmerer S. 2009. Effect of Rubisco activase deficiency on the temperature response of CO₂ assimilation rate and Rubisco activation state: insights from transgenic Tobacco with reduced amounts of Rubisco activase. *Plant Physiology* 151: 2073–2082.
- Yamori W, Noguchi K, Hanba YT, Terashima I. 2006. Effects of internal conductance on the temperature dependence of the photosynthetic rate in spinach leaves from contrasting growth temperatures. *Plant and Cell Physiology* 47: 1069–1080.
- Yamori W, Noguchi K, Hikosaka K, Terashima I. 2010. Phenotypic plasticity in photosynthetic temperature acclimation among crop species with different cold tolerances. *Plant Physiology* 152: 388–399.
- Yamori W, Noguchi K, Terashima I. 2005. Temperature acclimation of photosynthesis in spinach leaves: analyses of photosynthetic components and temperature dependencies of photosynthetic partial reactions. *Plant, Cell & Environment* 28: 536–547.
- Zaka S, Frak E, Julier B, Gastal F, Louarn G. 2016. Intraspecific variation in thermal acclimation of photosynthesis across a range of temperatures in a perennial crop. *AoB PLANTS* 8: pii: plw035.
- Zhang XW, Wang JR, Ji MF, Milne RI, Wang MH, Liu JQ, Shi S, Yang SL, Zhao CM. 2015. Higher thermal acclimation potential of respiration but not photosynthesis in two alpine *Picea* taxa in contrast to two lowland congeners. *PLoS ONE* 10: e0123248.